



**Canal &  
River Trust**

Making life better by water

# London & South East Annual Public Meeting 2022



- **Welcome** – *Ros Daniels, Regional Director*
- **Celebrating 10 years as a charity** – *Richard Parry, CEO*
- **Managing London Busy Waterways** – *Matthew Symonds, National Boating Manager*
- **Brent Reservoir** – *Neil Earnshaw, Environment and Heritage Manager*
- **Southall Grand Union Canal Wellbeing Way Project** – *Emma Harrington, Community Engagement Manager*
- **Hythe Bridge Visioning Project**, *Diana Fitzwilliam, Engagement Manager and Poorna Balaji, Enterprise Manager*





**Canal &  
River Trust**

Making life better by water

# Welcome and Introduction

Ros Daniels  
Director, London & South East



# Our Region

Welcoming,  
clean &  
safe

329 km of  
waterway

1300 locks,  
bridges,  
culverts & 8  
reservoirs

Living  
waterways  
that  
transform  
places and  
enrich lives

Breaking  
down  
barriers

1.9 m people  
within 1km of  
our network  
(1.3m in London)

124  
colleagues

Public  
Health &  
active travel

58 Constituencies,  
15 London  
Boroughs

Strategic  
partnerships

Capacity

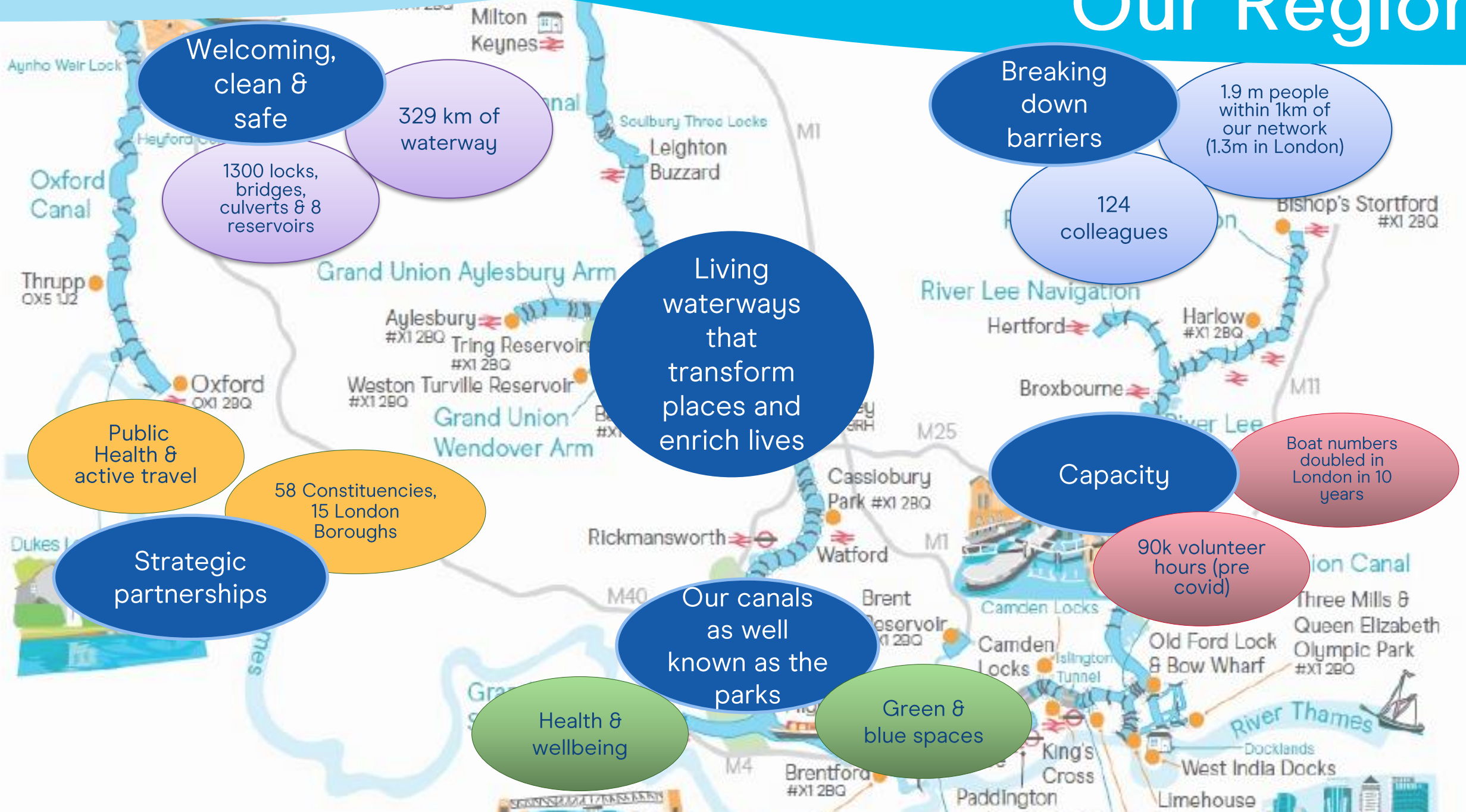
Boat numbers  
doubled in  
London in 10  
years

90k volunteer  
hours (pre  
covid)

Our canals  
as well  
known as the  
parks

Health &  
wellbeing

Green &  
blue spaces



# Our Story

What success looks like

## What success looks like

6

Number of Green Flag awards



19,905

Number of Volunteer hours during covid pandemic



7,500

Number of boats on London & SE waterways



Amount of weed removed

1,416 tonnes



Regent's Canal celebrated

200 years



Amount of rubbish removed

368 tonnes



22

Number of adoption groups



40

Number of partner groups



39

Number of Enterprise projects



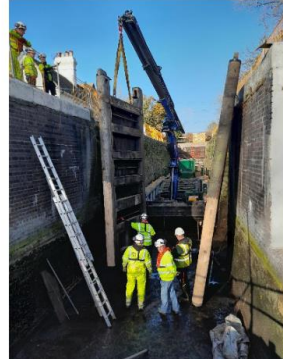
- Maintaining the waterways
- Festivals return
- Projects - Hertford Union
- London Boating and Eco moorings
- Lets walk, Lets paddle
- Towpath task force events
- Water Safety
- Brent Reservoir
- Docklands, Tottenham & Brent community programmes



# Core Work

## Core programme

- Public Safety
- Maintaining the waterways
- Winter Works 2022/23 consultation until 3<sup>rd</sup> June ([canalrivertrust.org.uk/notices](https://canalrivertrust.org.uk/notices))
- Contract management – vegetation, waste, aquatic weed
- Infrastructure projects and external funding
- Volunteering
- Boating surgeries and Customer Service Improvements



# London & SE Regional

Customer Contacts  
April 21 – March 22

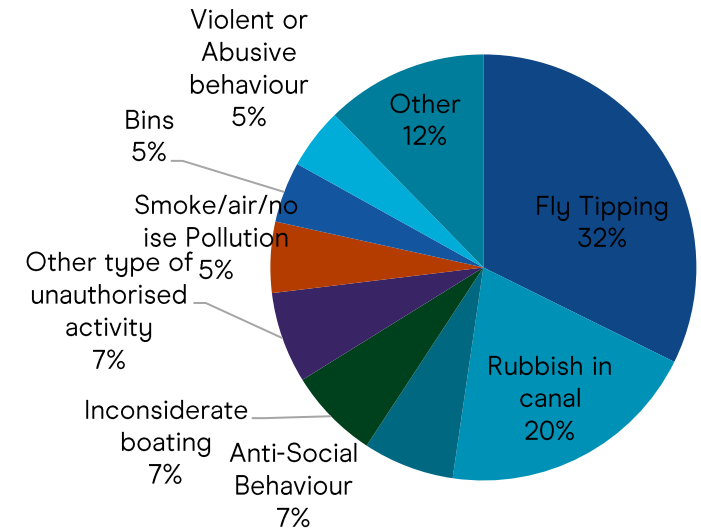
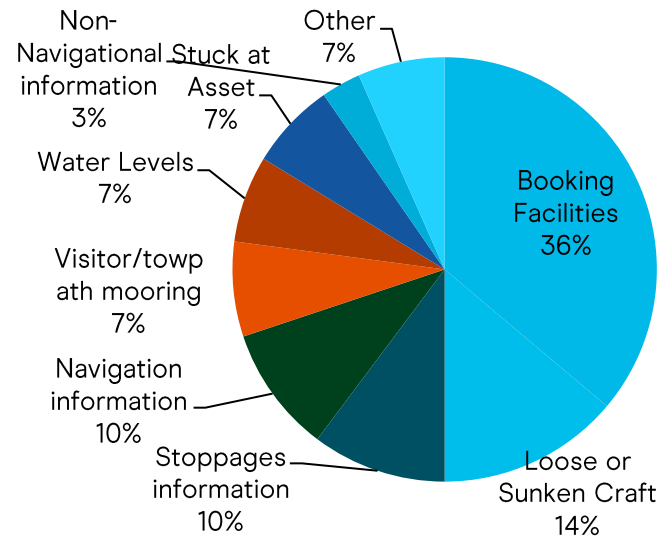
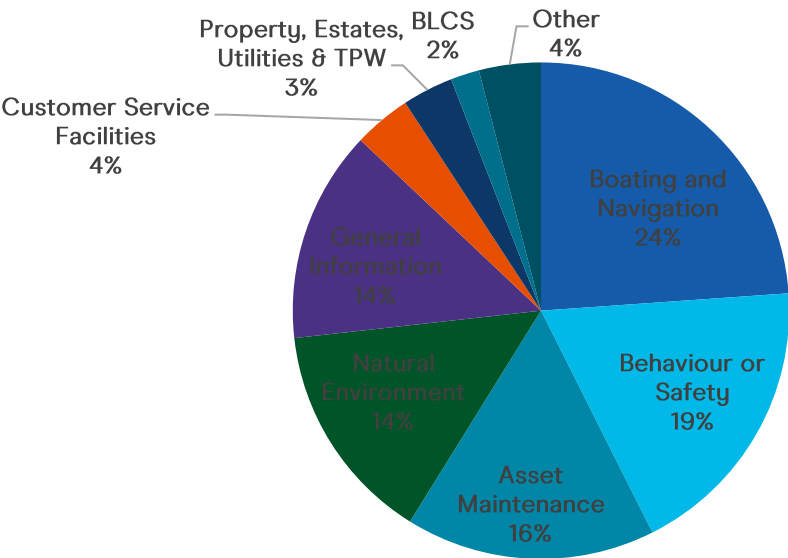
10,951

71% resolved 1<sup>st</sup>  
contact  
85% met within SLA



Boating & Navigation

Behaviour & Safety




# Beauty, wellbeing and Supporters

## Our Programmes

**Beauty On the Doorstep:** Active travel; Green Flag; Greening & barrier busting (Southall)

**Wellbeing on the Doorstep:** Hinterlands arts project; Lets Programme; Learning & Skills;

**Growing Brand, supporters and influence locally:** Festivals; Signage & Interpretation; Campaigns: #ActNowForCanals; Twitter relaunch:  @CRTSouthEast

**Community Roots programmes:** Tottenham & Brent





# Managing Busy London

## Managing busy areas



## Improving waterway experience for all



## Caring for the waterways



## Aims (year 2 of 3)

- London Mooring Strategy - targeted investment in customer service improvements & infrastructure
- Consultation on proposals to manage London's busy waterways eg visitor moorings consultation just concluded
- Lee Navigation Forum & Water Safety Zone
- Looking at alternatives for Customer Service Facilities eg water based options

## B21 London Boating Update:

- c1,000m more linear moorings (127 mooring rings)
- Vegetation clearance further 10 rings
- New CSF sites identified for more detailed feasibility work
- Working partners: OPDC
- New mooring signage
- London Boaters newsletter



# Fundraising projects

<b>Enterprise projects</b>	Waterway infrastructure and improvement projects
<b>London green social prescribing</b>	Wellbeing and nature recovery projects
<b>Greening the Region</b>	Habitat creation, skills development and biodiversity net gain
<b>Hanwell Flight</b>	Removal from 'Heritage at risk' register and community engagement
<b>Brent Reservoir</b>	Climate resilience, habitat improvements, education and engagement
<b>Docklands Cultural Programme</b>	Community outreach, youth engagement and education
<b>Sustainable boating &amp; air quality</b>	Exploring the transition to electric power and the support needed for the boating community





Canal &  
River Trust

Making life better by water

# Celebrating 10 years as a charity – and looking ahead





July 12<sup>th</sup> 2022

# First 10 Years - Achievements

- Usage rising – nearly 800m individual visits estimated last year, boat numbers risen 10% since 2012
- Volunteer growth – approaching 5m hours given
- Strong Investment performance – Endowment now valued at c.£1bn, vital to provide annual return and grow long term sustainability
- Nearly 1500 new lock gates made and installed
- Friends and Donors, overall £20m of charitable giving
- Widespread and growing community engagement delivering wellbeing benefits
- 440 miles of Green Flag accreditation achieved



# Waterways & Wellbeing - Pathway to Benefits

**Waterways  
Infrastructure  
Resilience**  
Safe and Reliable

**Beauty on the  
Doorstep**  
Accessible Blue /  
Green Spaces &  
Nature Corridors

**Wellbeing on the  
Doorstep**  
Platforms for health,  
leisure and recreation

**Impact**  
Social,  
Environmental,  
Economic &  
Cultural Benefits  
- for Individuals,  
Communities and  
Nationally

Wider social and economic benefits inseparable from core waterways resilience – wellbeing evaluation indicates value c.£4bn



# A National Infrastructure Network



Owens and maintains **10,000** major infrastructure assets including **1,072** important national infrastructure assets



**871** public road bridges and **2,099** other bridges



**782** major embankments and **827** major cuttings



**1,581** locks, **281** aqueducts, **55** tunnels, **1,954** culverts and **796** weirs (133 on rivers)

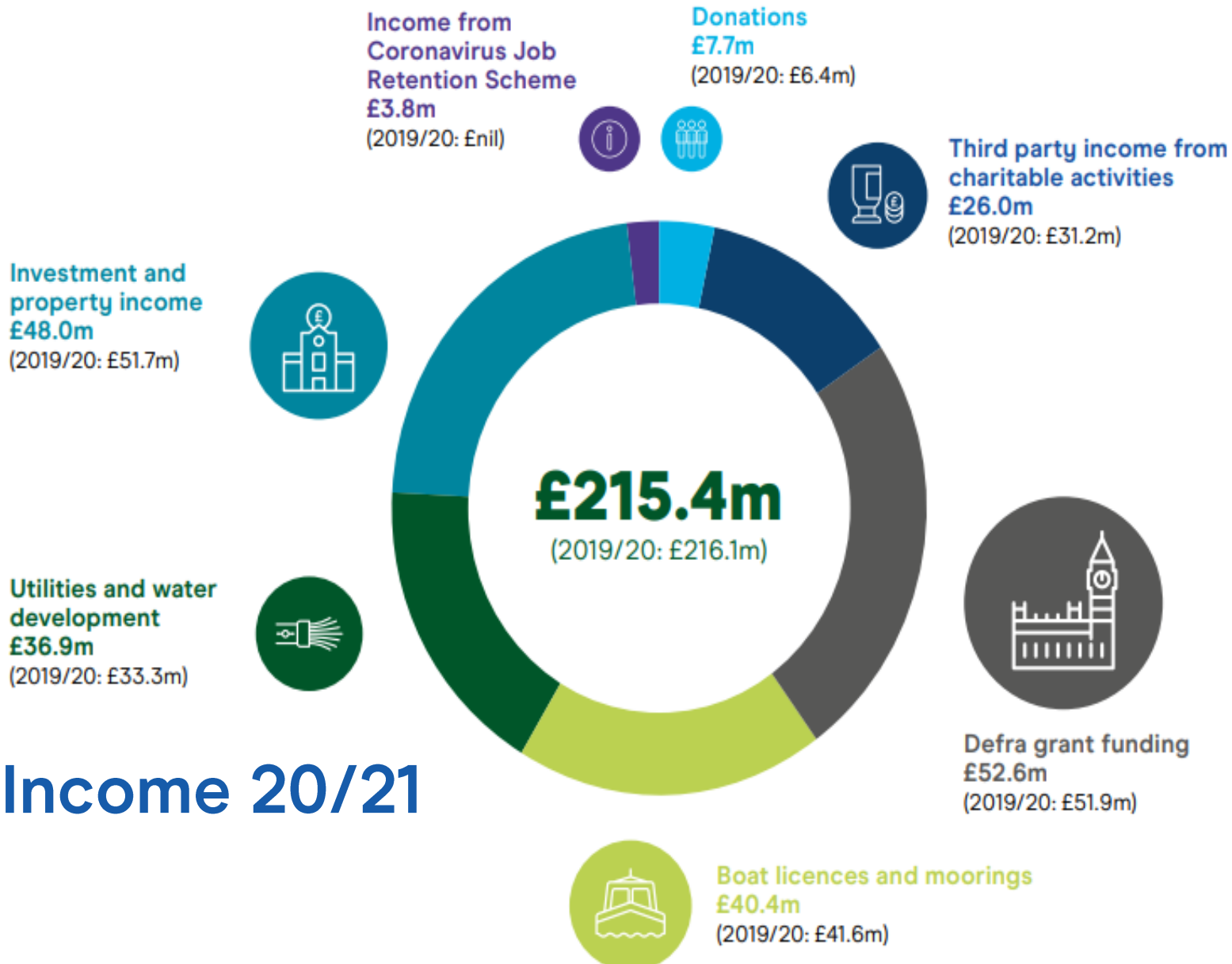


Oldest reservoirs in UK, with **70** being in high risk category



**4** dock complexes, Tees Barrage and **3** harbour authorities

# Sources of Income



- Long-Term Grant agreement provides vital foundation
- Still accounts for c.25% of income albeit down from nearly 40% in later 2000s
- Rising investment in waterway infrastructure needed, putting increasing pressure on Trust finances

Income 20/21



- Trust has Grant funding Agreement in place until 2027 but Grant now flat at £52.6m/year from 2021 to 2027, significant loss of real income
- Current inflation increases hitting Trust cost base disproportionately
- Grant Review to determine future Grant funding beyond 2027, determination due by July 2022
- Looking at different Grant scenarios, applying Treasury methodology
- Analysis to date indicates *not possible* to sustain waterways without good level of Grant post-2027, reflecting rising infrastructure costs from climate change
- Important we demonstrate public benefits, positive impact - and risks  
*-vital to mobilise wide range of advocates for the waterways*



**Canal & River Trust**  
Making life better by water

**Canal & River Trust**  
**Celebrating 10 years as a charity**  
Our role and responsibilities, risks and opportunities

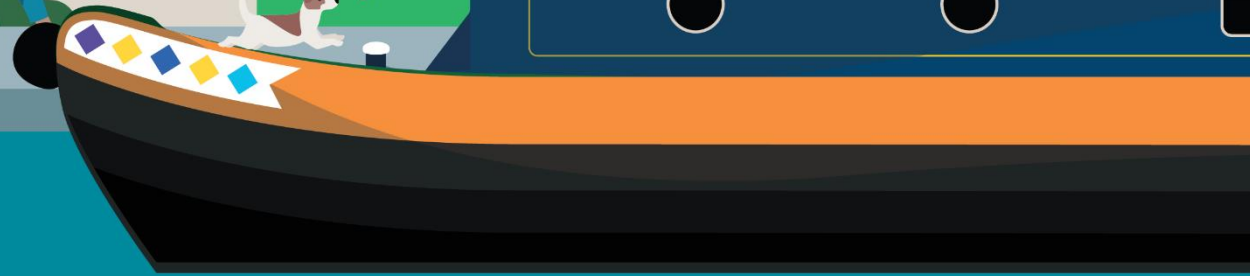




Canal &  
River Trust

Making life better by water

# Boating in London



Matthew Symonds  
National Boating Manager

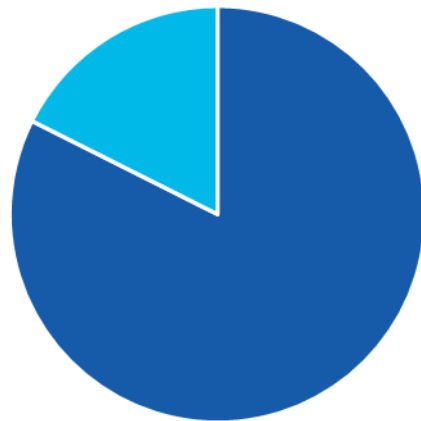




	2010	2011	2012	2013	2014	2015	2016	2017	2018	2019	2020 <i>COVID incompl ete NBC</i>	2021 <i>COVID no NBC</i>	2022
Not registered	26	22	28	31	34	55	19	39	31	84	78		101
Boats with a home mooring	1607	1506	1599	1674	1732	1797	1935	2007	1970	1914	1848		1867
Boats without a home mooring	413	522	638	769	1036	1225	1615	1880	2050	2208	2198		2282
MAC (mooring awaiting confirmation)	31	62	40	83	140	143	57	48	24	33	6		30
BIN	13	5	6	7	4	3	4	6	2	9	2		9
Trailable	1	5	5	4	6	16	12	12	7	10	10		6
Other Navigations	10	15	10	13	12	16	20	9	14	16	19		20
<b>Total</b>	2101	2137	2326	2581	2964	3225	3662	4001	4098	4274	4161		4315

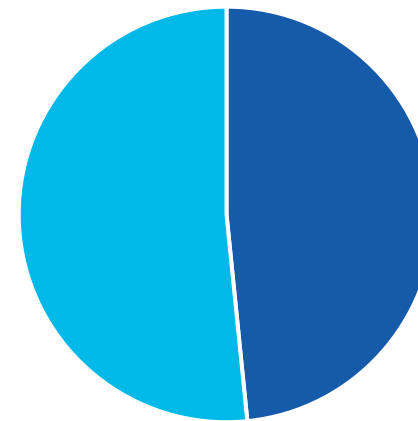
Boat sightings only on CRT enforceable waters

National all boats



■ Boats with a mooring ■ Boats without a mooring ■ ■

London



■ Boats with a mooring ■ Boats without a mooring ■ ■

Boats without a home mooring (CC) make up more than half of boats in London. The CC boats in London make up 36.5% of all the CC boats on the Trust's network

# Managing mooring in London




# Managing moorings in busy London

---

- We have consulted on specific proposals for further pre-booked moorings (some seasonal)
- Managing short-stay mooring better
- The level for overstay charges for exceeding short-stay mooring stay times
- Banning any double mooring of widebeam boats on some sections
- Asking views on the principle of creating more permanent online moorings in certain areas further away from the busier area



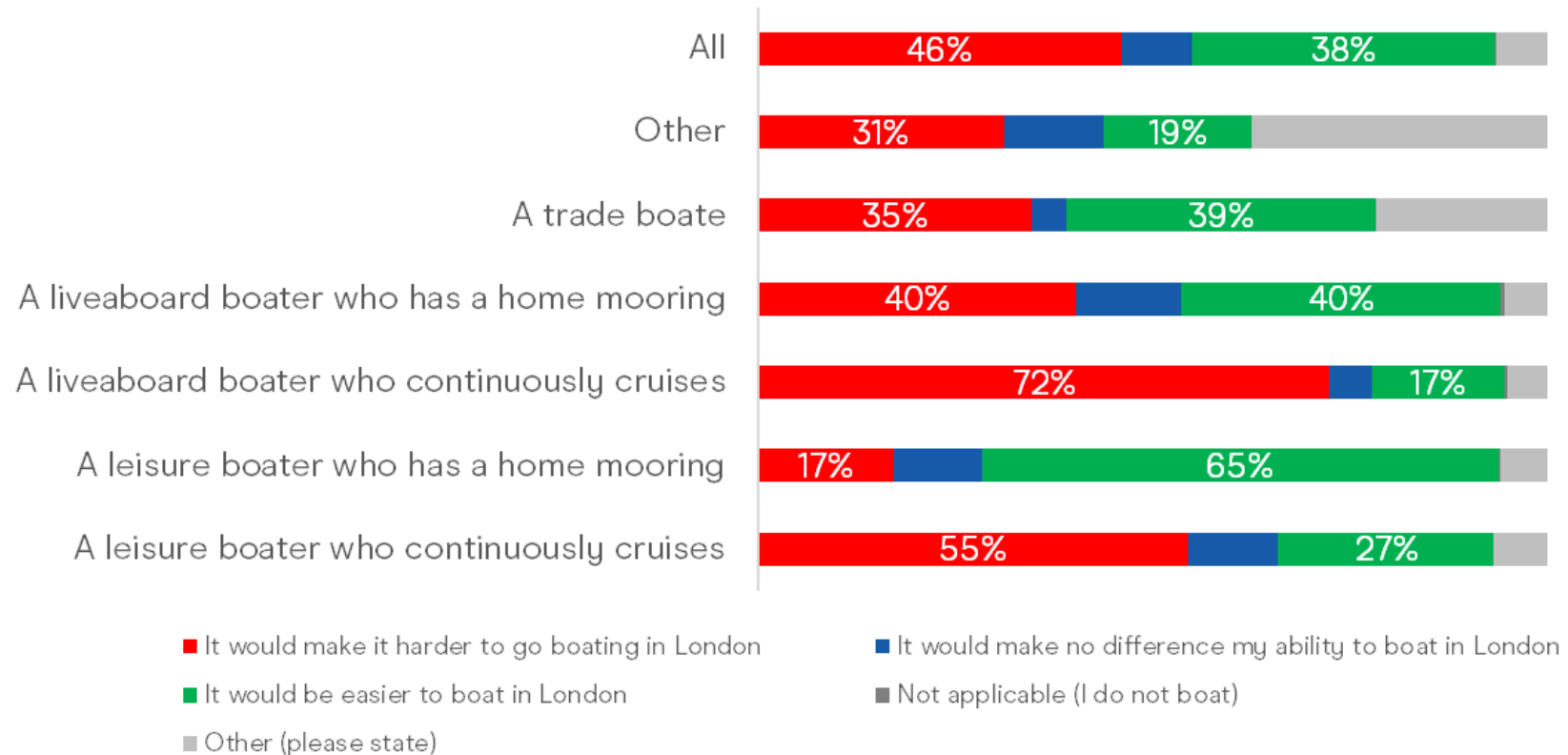
- 
- There were 1014 responses to the consultation
  - 96% of responses were from boaters, 55% of whom said their boat was their permanent home
  - The largest response was from boaters with narrow boats (82.8%), followed by boaters with wide beam boats (10%) and finally those with motor cruisers (4.8%).

*'The object of the exercise should be making moorings available for boats, already having paid a considerable licence fee'*

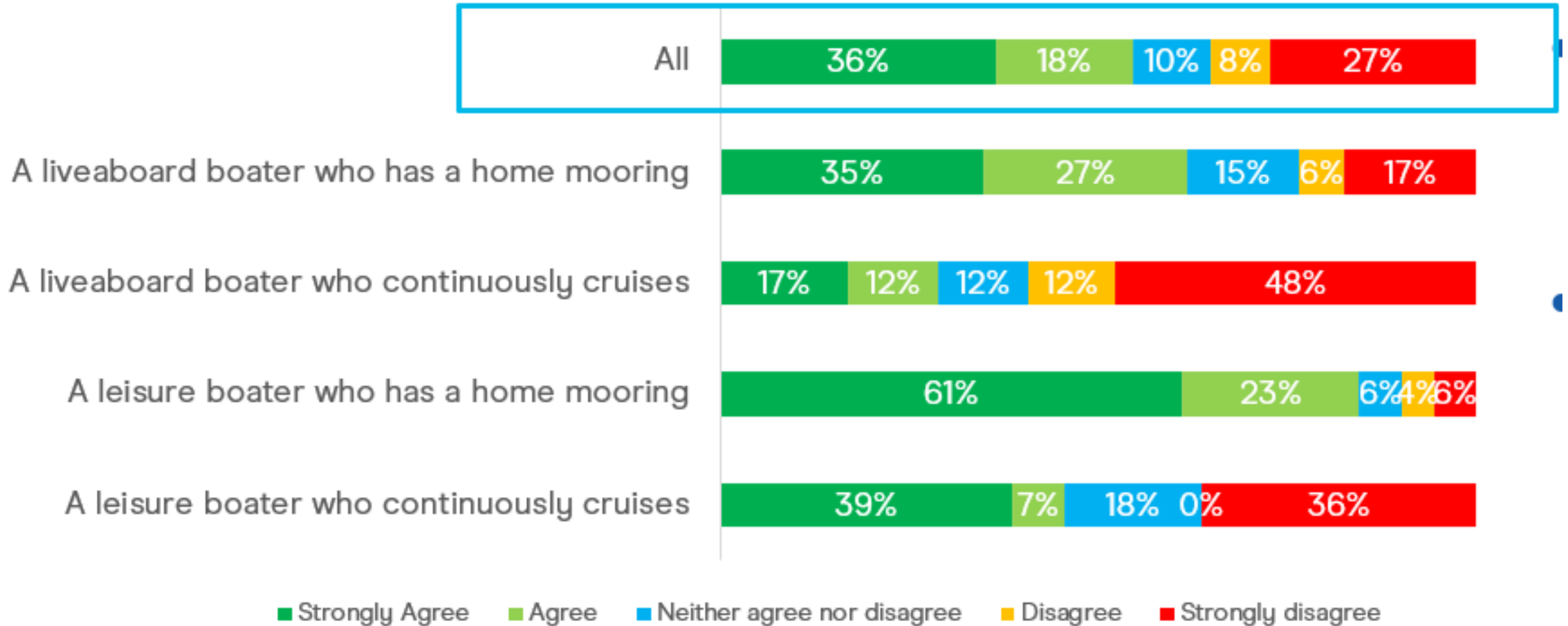
*'It is not a pleasant situation to arrive in London area in a late afternoon and not be able to find a safe mooring for the night.'*

# Pre-book / paid for short-stay moorings

How would the introduction of further paid for pre-bookable visitor moorings Impact on your ability to boat In London?



# Increased rangers and boat sightings



# London: Water Safety Zones



# Water Safety Zones – update

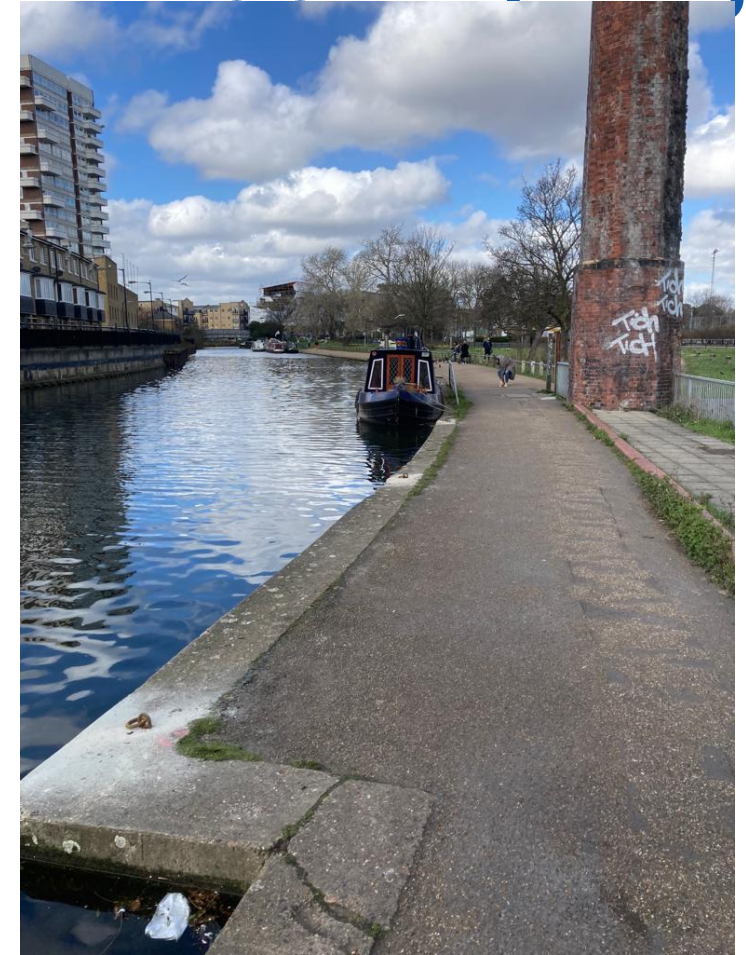
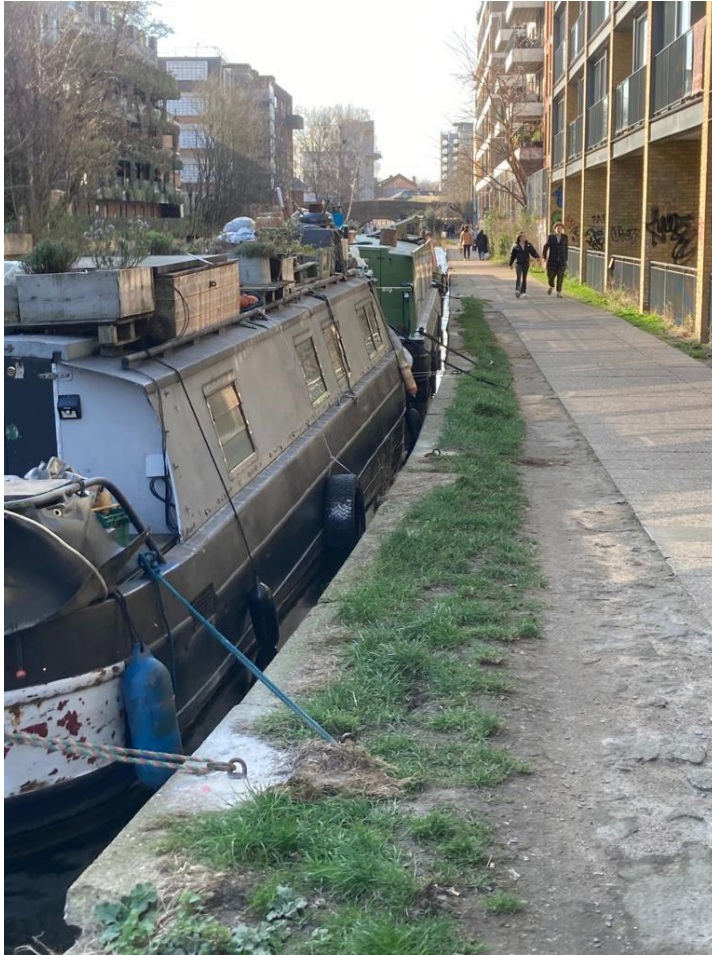
- Since January we have been using daily sightings to apply the improper mooring process on the River Lee.
- In the first six weeks we sighted 114 identifiable boats improperly moored
- Aprox boats unidentifiable (no index number displayed) – separate process for this.
- Of the identifiable boats 40 moved after first sighting/notice, further 15 moved within a week.
- All other boats within the improper mooring process.



- We have installed new mooring rings into hard edge to create additional towpath mooring capacity in London
- Three quarters of a mile of new towpath mooring space in central London, installing approximately 150 rings into the concrete edge on the Grand Union Canal, Regent's Canal and Limehouse Cut.
- Additional floating offside vegetation installed.
- Vegetation cut back on the Limehouse Cut to make new and existing rings accessible.
- Dredged half-mile stretch at Norwood Top Lock to significantly improve the ability to moor.



# London Mooring Strategy – mooring rings





# London Mooring Strategy – facilities

- New water point to be installed close to ‘The Collective’ (Old Oak) on the Paddington Arm. Installations due this summer but connection to the water main will be dependent on the utility company
- We’ve relocated the tap from ‘Old Ford Lock’ to a new location nearby will help stop those using the tap from blocking the lock



# Steel Road Harlesden



How can we turn this space into a more pleasant public space for boaters, workers in the area, and local residents?

# Steel Road Harlesden



1. Steel Road Entrance
2. Seating and wayfinding
3. Workbenches
4. Boater Facilities
5. Planting

- Consultation on proposals for Steel Road Harlesden runs until Tuesday 1 March
- [Harlesden Canalside | OPDC have your say \(london.gov.uk\)](#)
- **Consultation platform** to view the [masterplan](#) and [concept designs](#) and leave feedback in our [online survey](#).



Canal &  
River Trust

Making life better by water

# Milton Keynes Visitor Moorings



- 6 brand new 48 hour visitor moorings
  - Wolverton – Between Bridge 70A Stephenson’s and 71 Stratford Road
  - Giffard Park – Converting 50m of VM in to 48 hour section by the facilities
  - Campbell Park - Between Bridge 82 and 81b
  - Woolstone - Between bridge 83 and Bridge 82A (H6)
  - Peartree - Opposite Peartree Bridge Inn
  - Simpson - Between bridge 91 and Aqueduct GU-131-001
- SITES WILL REVERT TO 14 day moorings over the winter months



# What is being proposed?



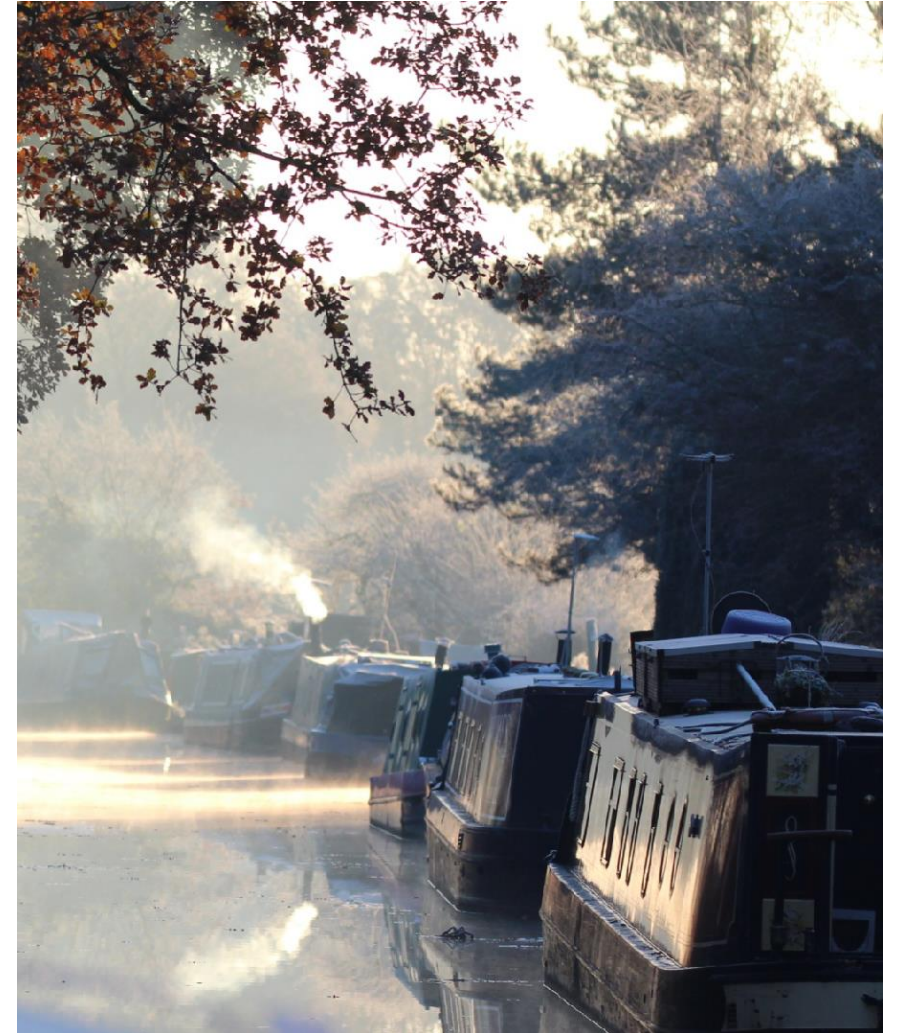
- Also improving signage at 4 other Visitor Moorings.
- Improving signage at a number of water points to stop overstaying.
- Customers are able to provide feedback on the new moorings by contacting - [Enquiries.londonsoutheast@canalrivertrust.org.uk](mailto:Enquiries.londonsoutheast@canalrivertrust.org.uk)



# **Environment Act changes**



- Local Authorities will be able to bring moored vessels (e.g. canal boats) into scope of Smoke Control Areas (SCAs)
- Smoke from private dwellings in SCAs will no longer be exempt from statutory nuisance legislation.
- Solid fuel retailers will need to notify potential customers that it is an offence to buy unauthorised fuel for use in a SCA.
- The limit on the fine for selling unauthorised fuel will be removed



Local Authorities would be required to consult before bringing inland waterways into scope.

## Consultation:

The environmental targets consultation will be hosted on CitizenSpace, here is a link to the Defra citizen space page: [Defra - Citizen Space](#) it isn't listed as a forthcoming consultation yet as the date hasn't quite been finalised, but it should be live in "spring."

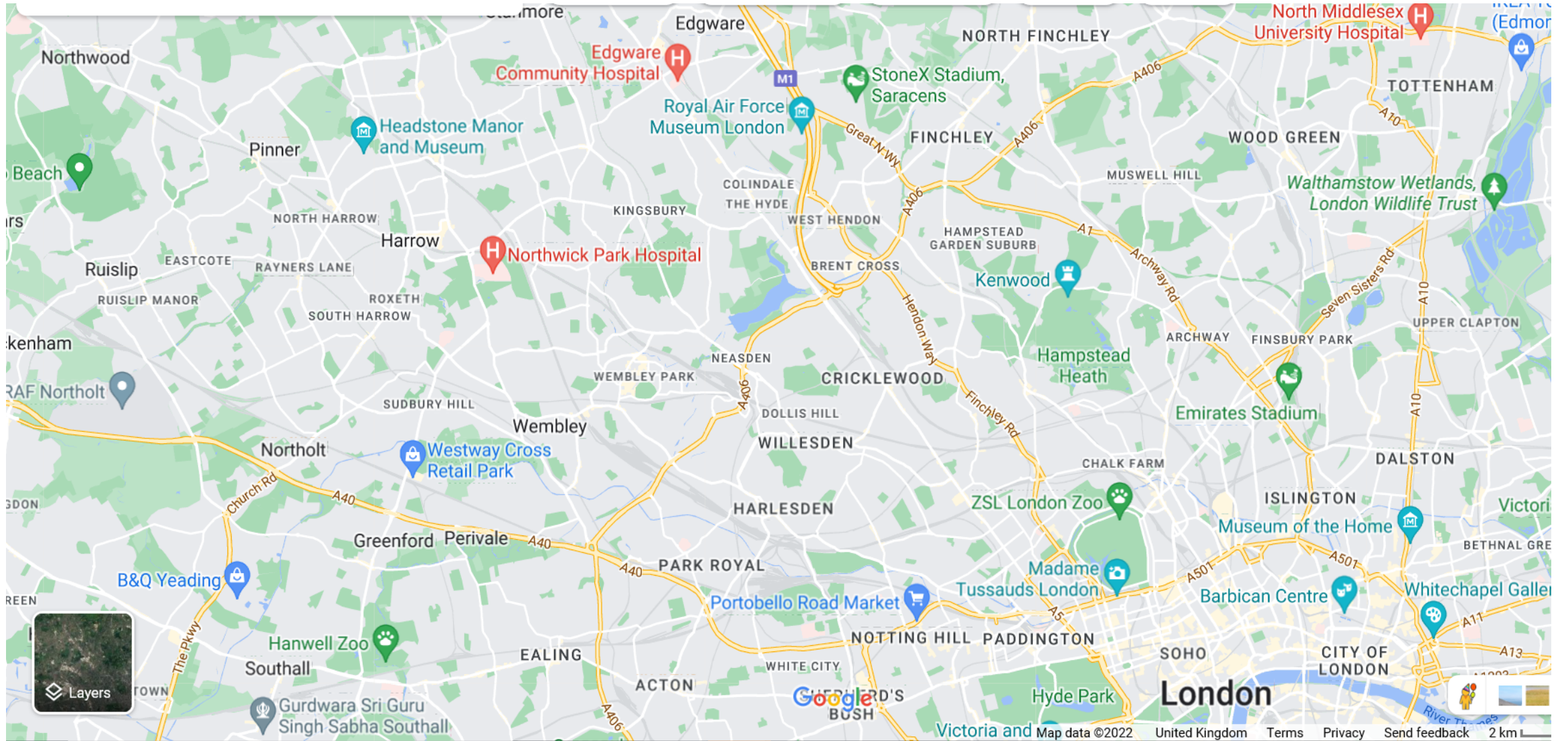
- Asked Defra for details of all SCAs so that we can map these against the Trust's waterway network
- Exploring potential towpath tile signage to inform boaters when they are within a SCAs
- Updating information to boaters on these changes that will come into force (subject to local consultation)
- Requests from local authorities for boater details in relation to statutory nuisance breaches of SCA rules will be handled through existing information request process
- Develop a longer term strategy re electric charging points

# The Welsh Harp

Neil Earnshaw  
Heritage & Environment Manager



# Where?!



# The reservoir drawdown - early 2021



- Trust responded with debris recovery from the reservoir during and post-drawdown



- Welsh Harp strategic partnership group reconvened



- Joint vision project commissioned



# We need your views and ideas for the future of the Welsh Harp!

Welsh Harp Strategy Group is working together to create a Joint Vision for the future of the Welsh Harp & Brent Reservoir as a place for wildlife and for people!

As part of this process we want to understand how the Welsh Harp area is used today: what you love, what worries you, what we should know about, and your ideas for how it should change in the future.

[www.canalrivertrust.org.uk/welsh-harp](http://www.canalrivertrust.org.uk/welsh-harp)

share your ideas and observations!

reply by 10th October

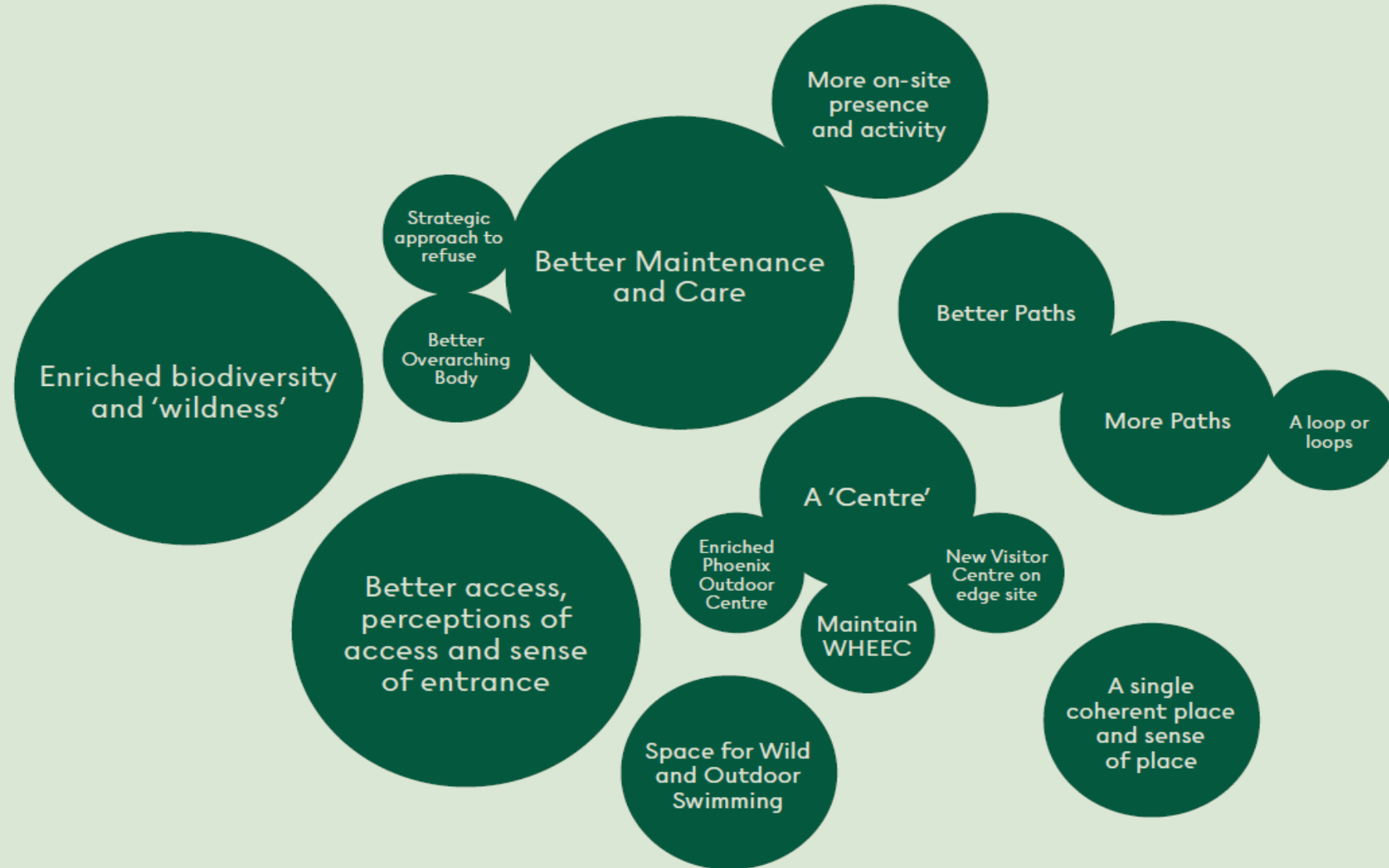
This is a project by DC, CM and JCLA for the Welsh Harp Strategy Group which includes



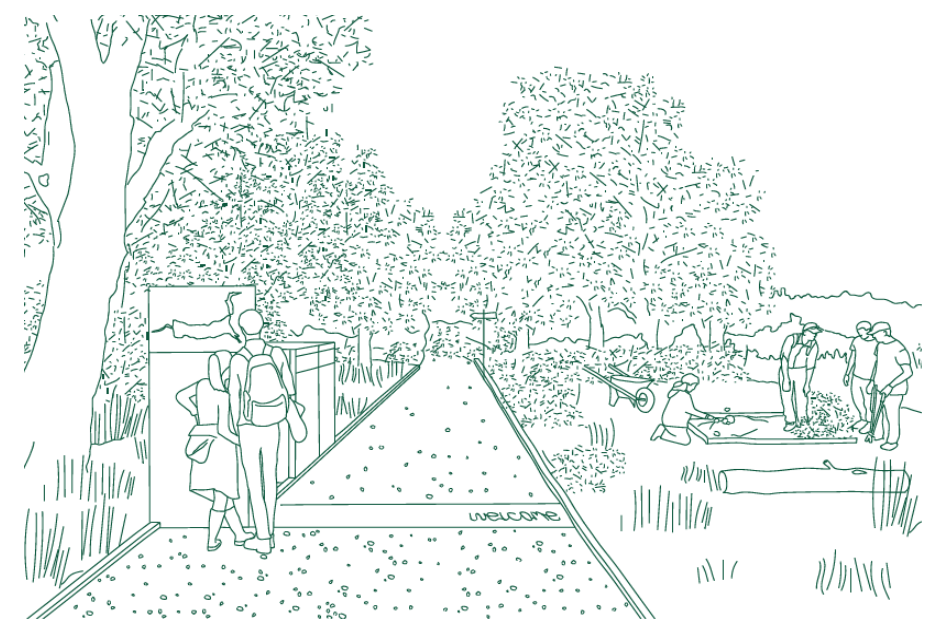
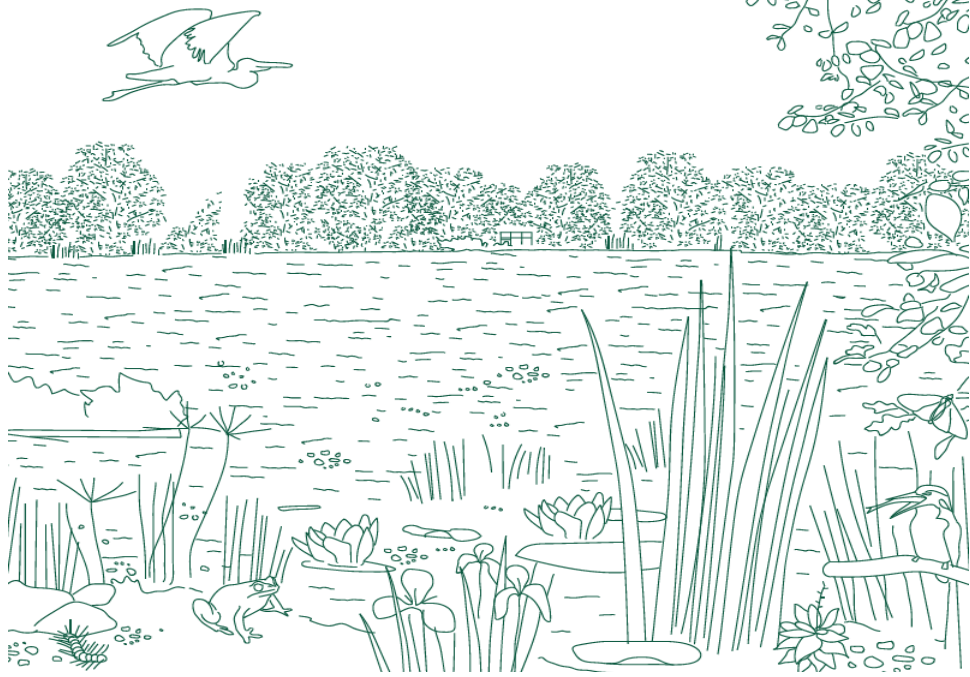
"Paths can get water logged and very muddy."



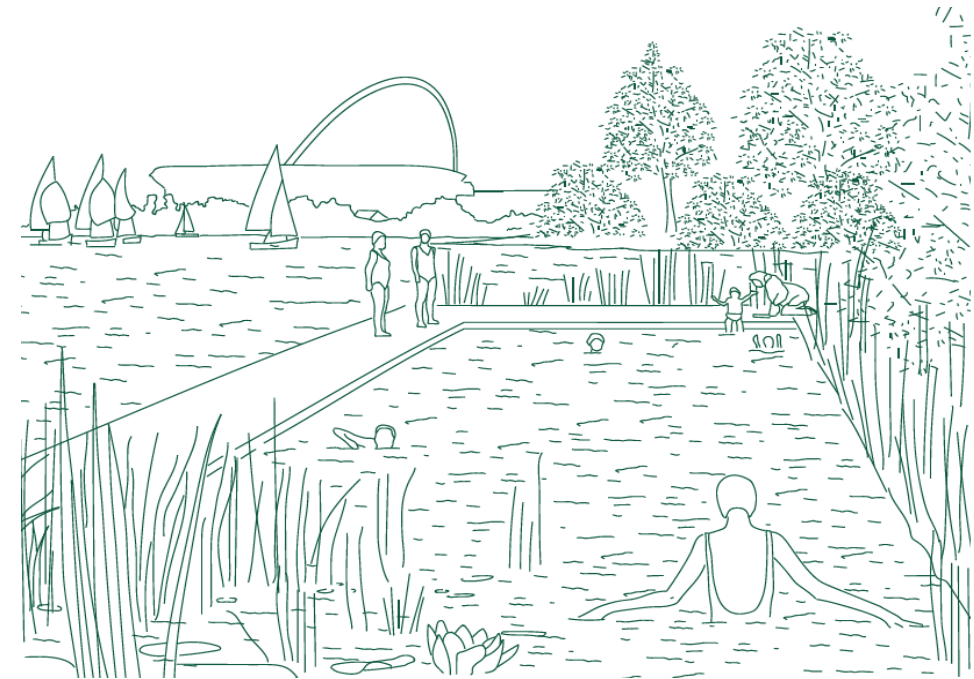
# Engagement Summary







- Biodiversity
- Access & inclusion
- Identity & heritage
- Health & wellbeing
- Sport & recreation



# National interest and support



# Improvements underway

- Habitat enhancement work, Jan/Feb 2022
- Tree works/debris removal/habitat improvement



**PEOPLE'S  
POSTCODE  
LOTTERY**



Canal &  
River Trust

Making life better by water

# Southall Grand Union Canal Wellbeing Way Project

Emma Harrington  
Community Engagement Manager





1. Lets Go Southall



2. Vision



3. Consultation on Feasibility Study



4. Analysis of contributions, thoughts, ideas and feedback

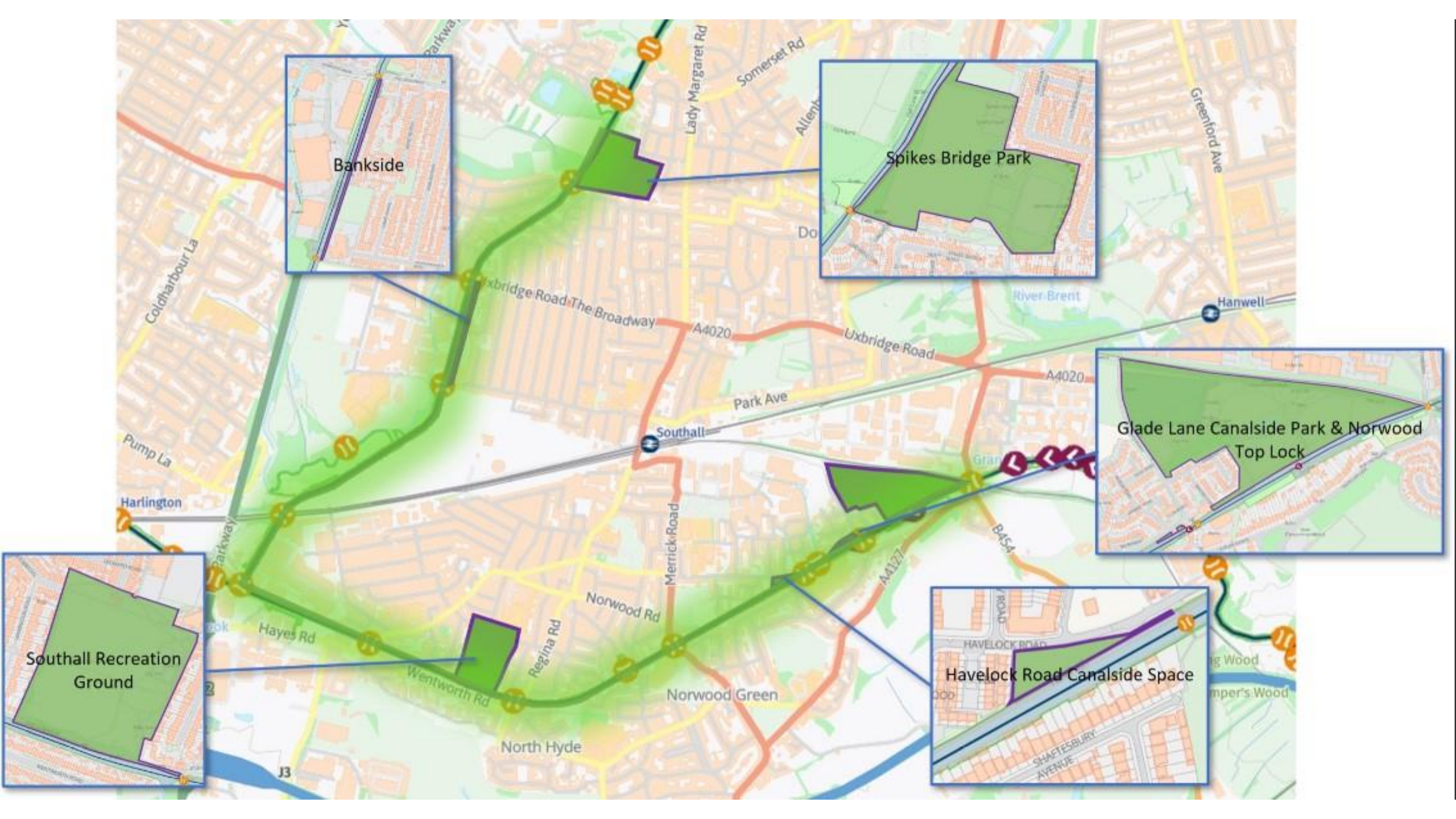


5. Fundraising stage



6. Development and delivery





Bankside



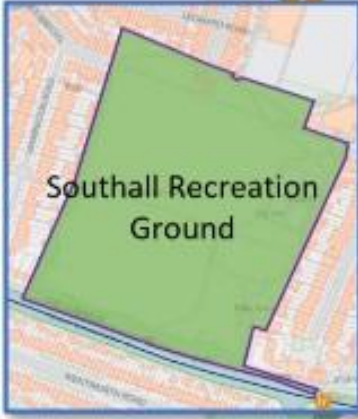
Spikes Bridge Park



Glade Lane Canalside Park & Norwood Top Lock



Havelock Road Canalside Space



Southall Recreation Ground

Map labels include: Coldharbour La, Pump La, Harlington, Parkway, Uxbridge Road, The Broadway, A4020, Park Ave, Southall, Merrick Road, A4127, BASA, Norwood Rd, Regina Rd, Hayes Rd, Wentworth Rd, North Hyde, Norwood Green, Somerset Rd, Lady Margaret Rd, Allenh, Greenford Ave, Hanwell, River Brent, and Shaftesbury Avenue.



**EXERCISE**



Outdoor gym stations



**IMPROVE SIGNAGE & INTERPRETATION**



Directional signs and information boards



**SOCIALISE**



Cultural, Art and Heritage events



Family gatherings

Volunteering and social events



Bird watching

**TRIM TRAILS AND LOOP ROUTES**



Walking

Jogging



Cycling

Dog walking



**FORMAL AND INFORMAL PLAY**



Activities for all ages and abilities



**FOOD GROWING**

Edible planting  
Community orchards



**How can we create more special canal places in Southall?**

**INVESTIGATE OPPORTUNITIES AND INNOVATIVE WAYS TO ENABLE:**

- Creating attractive and inviting spaces on and around the canal
- Linking the canal from nearby areas
- Improving the environment
- Providing opportunities to enjoy the canal and connect with the water and nature
- Providing opportunities to connect with others and enjoy family time outdoors
- Provide nice places to wander, dwell, exercise
- Link community culture and the canal

**WILDLIFE ENHANCEMENTS**



Wildflower meadows



Bat boxes



Bug hotels



Bird boxes

Rain-gardens



Potential step-free access from lock to towpath



Potential new recreational foot/cycle path away from towpath and a trim trail along it

Existing informal path

Potential for stronger integration of towpath into existing Glade Lane 'loop' routes via creation of additional activity stops and focal points

Norwood Top Lock (see next page)



Feasibility study underway to explore possible towpath width and surface improvements and improvements to access points



Directional signs and maps e.g. wildlife information signs or wildlife treasure hunt. Existing entrance points into the park improved with solid surfacing, bell-mouth corners, clearer lines of sight, better visibility into the park and signage



Potential for community space and food growing garden (raised beds etc.) with volunteering and adoption opportunities, marking the footprint of the old lock keepers cottage.

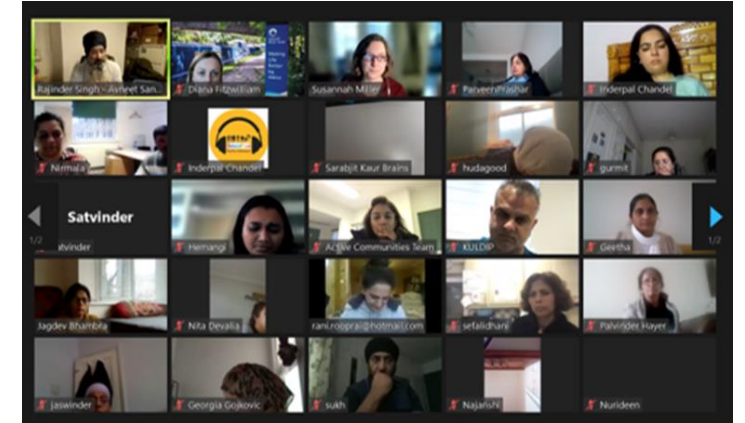


Potential for community orchard to reflect previous use of the land within part of the Park (with volunteering and adoption opportunities).

- Towpath
- Other pedestrian and cycle routes
- Potential activity zone
- Additional vegetation and/or existing vegetation management

- Potential formalised access point
- Additional directional signs
- Potential step-free access from lock to towpath
- Potential for improved access and new paths

- |   |   |  |   |  |
|---|---|--|---|--|
| Ealing Council                            | Let's Go Southall project team          | Open Havelock Project Hillingdon Council | Berkeley Homes (Southall Waterside)     | Southall Community Alliance                |
| EcoSikh UK                                | LagerCAN Ealing                         | Ealing Wildlife Group                    | Friends of Grand Union Canal            | The Sharks Canoe Club                      |
| Three Bridges School                      | Havelock Primary School                 | Havelock and Greenfields Children Centre | Belvue College                          | Sybil Elgar School                         |
| Westplay (West London's play association) | Norwood Top Lock Volunteer Lock Keepers | West London Inland Waterways Association | Groundwork London                       | Sustrans (Havelock cycle hub and training) |
| Thames21                                  | Southall Transition                     | Ealing Wildlife Group                    | Hanwell and Norwood Green Orchard Trail |  |



Bankside residents

Canalside residential  
neighbours and  
residents' associations

Canal & River Trust  
registered boaters

Southall Councillors  
and ward forums

Schools

London Fire (Southall)

Southall Broadway  
Police

Ealing Job Coaches  
Team and their group  
of young people with  
Special Educational  
Needs

UK Youth

Ealing & Hounslow  
Community Voluntary  
Service

Ealing Community  
Network

Ealing Cycle  
Campaign

Hillingdon Canals  
Partnership



# Let's Go Southall community comments (support for the project):

Such a brilliant idea as I have never felt it to be safe walking there due to lighting, safety and unwanted characters. Would be awesome for me and my children to be able to cycle through.

Osob, Let's Go Southall

Canal walks are needed. Being outdoors there's so much beneficial for mental health and wellbeing.

Rani, Let's Go Southall

Needs to have a mental well-being feel around the marketing / messaging. Focus on improving mental well-being.

Jaspal, Let's Go Southall

Improve image of Southall.

Parveen, Let's Go Southall



The spaces needed to change behaviour on the canal like cafes etc are quite crucial.

Rajinder, Let's Go Southall

Definitely needed.

Ravinder, Let's Go Southall

I like all the different activities.

Jaspal, Let's Go Southall

I think this project is a great starting point - I like it all.

Bally, Let's Go Southall

Ideas are brilliant – but how will they be maintained? The project is for the Southall Community, nothing in there not to like – everything is perfect, lovely; nice when it comes together.

Rani, Let's Go Southall

Definitely needed. I like: cafe idea, wildlife, green areas near the canal.

Ravinder, Let's Go Southall

The project is fantastic to improve the quality of life of people of Southall. And a good canal space would lead to better usage and active community- also it will lead to reduction in drug use and crime ultimately. Agree cafes, picnic areas play area for children.

Inderpal, Let's Go Southall



It's a dream project and bike ride there I will be feel safe happy to go there thank you.

Hudagood, Let's Go Southall

Nature walks, talks on regular canal care.

Parveen, Let's Go Southall

There is so much scope for improvement and really good something is being done. Glad it's being cleaned up.

Ravinder, Let's Go Southall

So glad this is being done, really needed. Let's do this!

Rani, Let's Go Southall

Canal & River Trust, Ealing Council and Catalyst have received a grant from the GLA Green and Resilient Spaces Fund for support to deliver **the Southall Grand Union Canal Wellbeing Way project**.

---

Builds on the feasibility and early engagement work we have been doing with Ealing Council and its Sport England funded Let's Go Southall project, and with housing association Catalyst

---

Canal & River Trust believes that spending time by water makes people happier and healthier. We want everyone in Southall to use and enjoy the wellbeing benefits of the canal and its towpaths and the green spaces it connects; a natural health service on the doorstep.

# What is the Wellbeing Way?



A linked chain of green spaces along the canal, wrapping around Southall to provide wellbeing opportunities to its residents and help people and nature thrive

The Southall Grand Union Canal Wellbeing Way will promote the five key principles of wellbeing:

Connect - Be Active - Take Notice – Learn – Give

Spikes Bridge  
Park

Bankside

Southall  
Recreation  
Ground

Havelock Road  
Canalside Park

Glade Lane  
Canalside Park

Norwood Top  
Lock

# Projects and Improvements

---

Waterside place-making

---

Habitat creation & biodiversity enhancements

---

Towpath improvements

---

Better access to the canal

---

Play

---

Interpretation

---

Flood resilience

---

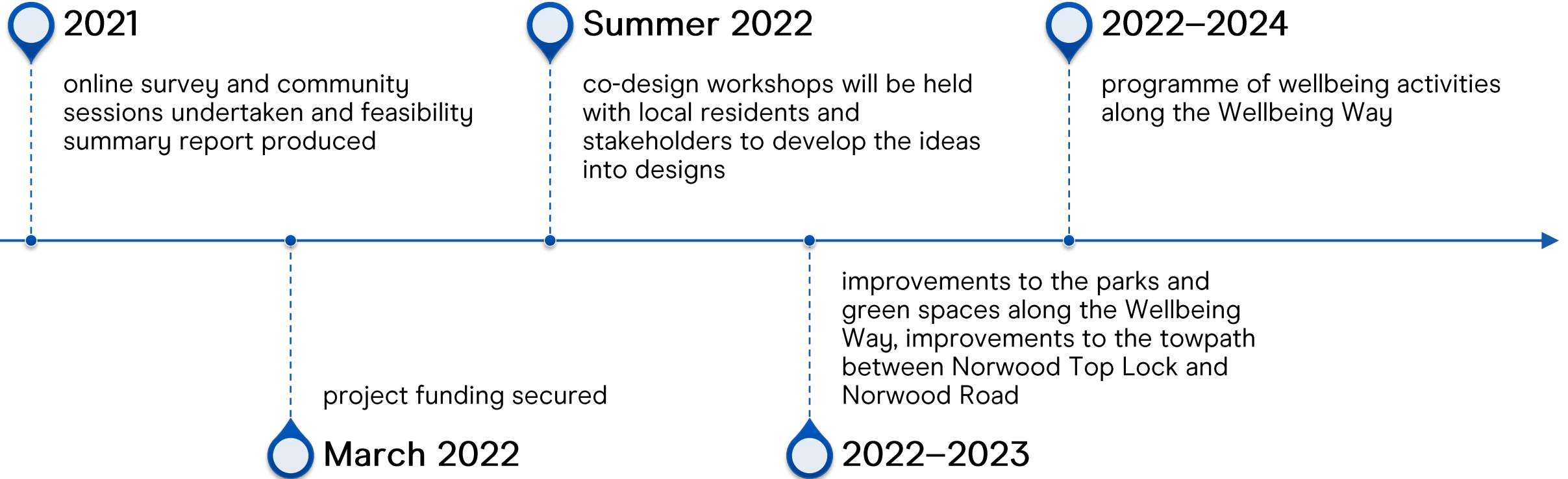
Gardening

---

Stewardship







Let's Go Southall – active lives & Sport England

Feasibility and engagement stage

Public consultation

Fundraising

Community engagement in co-design

Partnerships





**Canal &  
River Trust**

Making life better by water

# Hythe Bridge Visioning Project

Diana Fitzwilliam, Engagement Manager

Poorna Balaji, Enterprise Manager

- Oxford is one of L&SE region's five Focus Areas
- Scoping report produced in 2021
- Hythe Bridge to Isis Lock in Oxford City Centre was identified as an area for improvement with potential to become a key destination for Oxford residents (150k) and visitors (7m).



**Hythe Bridge** - starting point of The Oxford Canal and 1<sup>st</sup> blue / green space for those entering Oxford by train

**The Canal Corridor** - well used and popular pedestrian route, with rich bio-diversity and 16 residential boater moorings

**Isis Lock** - navigational access point for The Thames and The Oxford Canal via Castle Mill Stream.

**Ownership** - Hythe Bridge green space is split between The Trust & Oxford City Council. Castle Mill Stream which runs parallel to The Oxford Canal is owned by the Environment Agency.

- To improve access and use the area for positive activities, whilst promoting well-being, enhancing the landscape & habitats, heritage linkages and raising Brand awareness
- To co-design a Vision for the area through engagement with local stakeholders to identify landscape and community improvements to protect and enhance the area for existing and future users.

# Developing a Vision for Hythe Bridge

**Nov 21**

**HB Task & Finish Group (Trust and Oxford City Council)**

**Dec 21 – Jan 22**

**Brief developed, LDA Design appointed, site analysis undertaken**

**Feb – Mar 22**

**Stakeholder discussions, 3 online stakeholder workshops, 1 onsite community event**

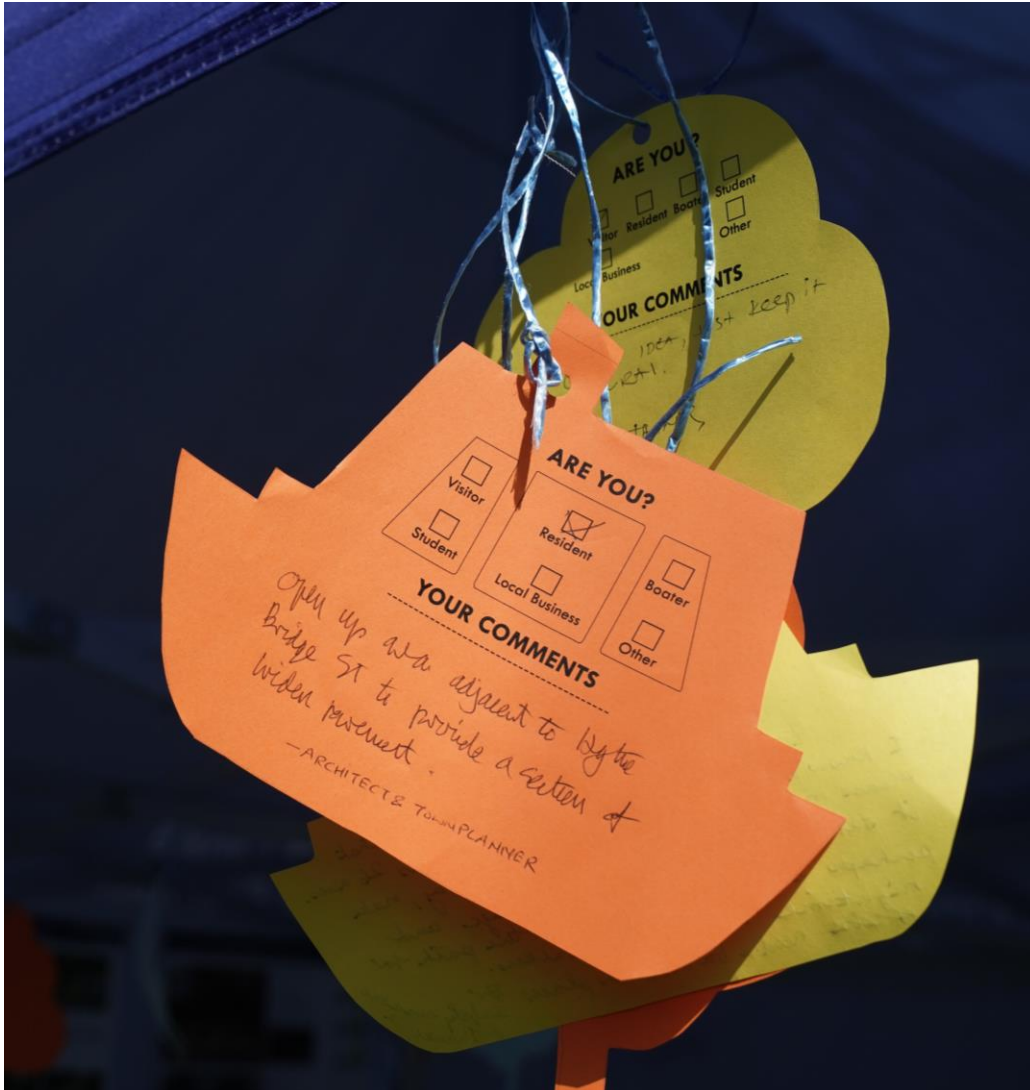
**Apr – May 22**

**Collation of all stakeholder input, 1 online feedback session, Vision report development**

**Next steps**

**External and internal sources of funding will be sought to deliver improvements. Partnership working will continue.**







# Watch this space...








**Canal &  
River Trust**

Making life better by water

# Thank you!

Canal & River Trust

 @canalrivertrust  
 /canalrivertrust  
 /canalrivertrust