



**Canal &  
River Trust**

Making life better by water

# Harthill Reservoir Project Update

Public consultation  
January 2022

# Contents

- 1) Introducing Canal & River Trust and Harthill Reservoir
- 2) Public consultation
- 3) Our timescales
- 4) Our proposals
- 5) Temporary changes



**Canal &  
River Trust**

Making life better by water

# Introducing Canal & River Trust and Harthill Reservoir

# Canal & River Trust

We're the charity who look after 2,000 miles of waterways across England and Wales.

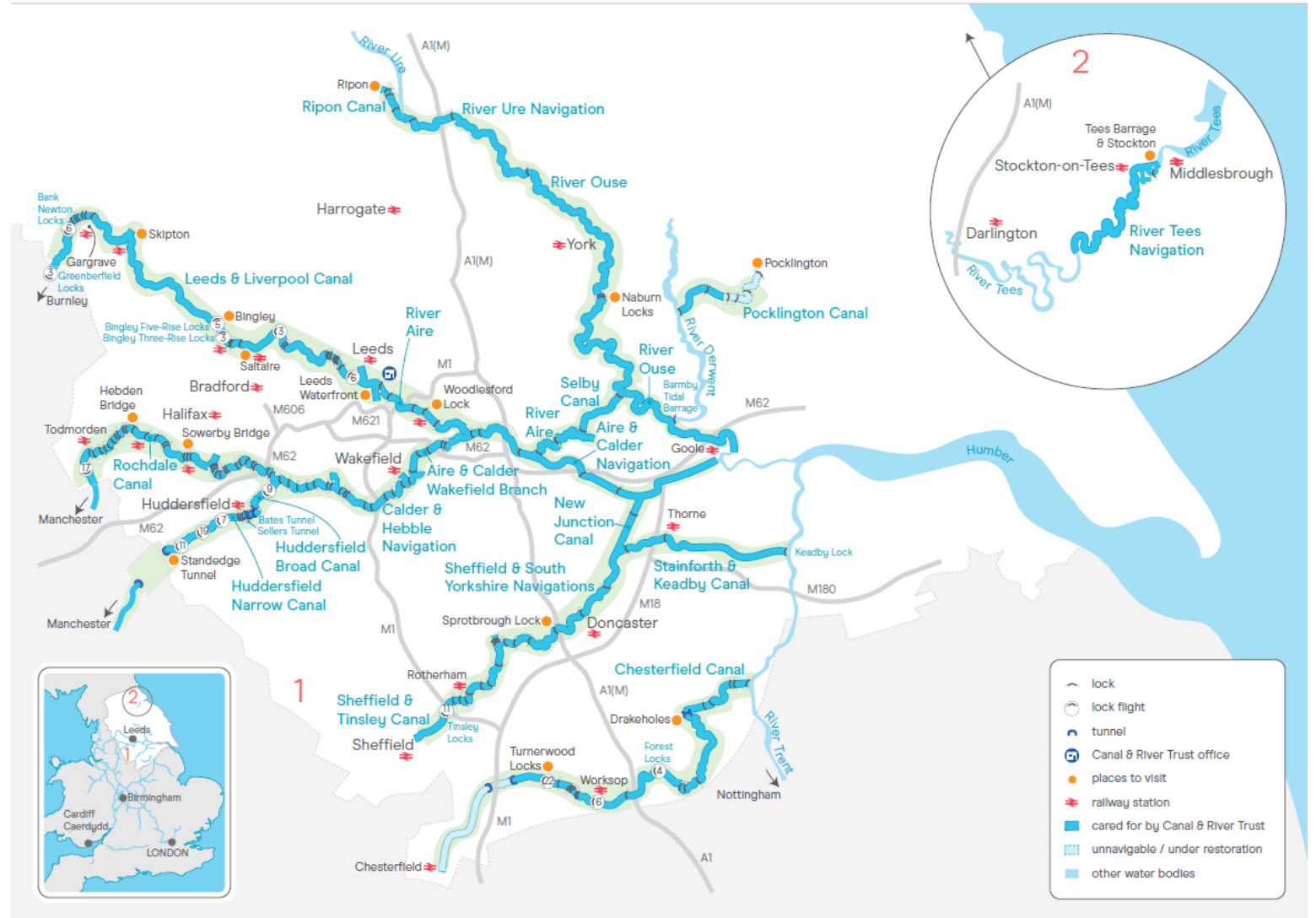
316 miles (16.51%) of our network is in the Yorkshire and North East.

The region is home to 19 canals and rivers.

1 million people in Yorkshire & North East live within 1km of their local waterway.

Research shows how our waterways can help to improve our physical health and mental wellbeing and we work with communities to help them make the most of these blue spaces.

[www.canalrivertrust.org.uk](http://www.canalrivertrust.org.uk)



# Harthill Reservoir

---

Harthill Reservoir was constructed over 200 years ago.

---

Today, the reservoir still plays an important function by supplying water to Chesterfield Canal, located two miles to the north.

---

It is also a popular attraction that hosts many health and wellbeing activities including sailing, swimming and angling clubs.

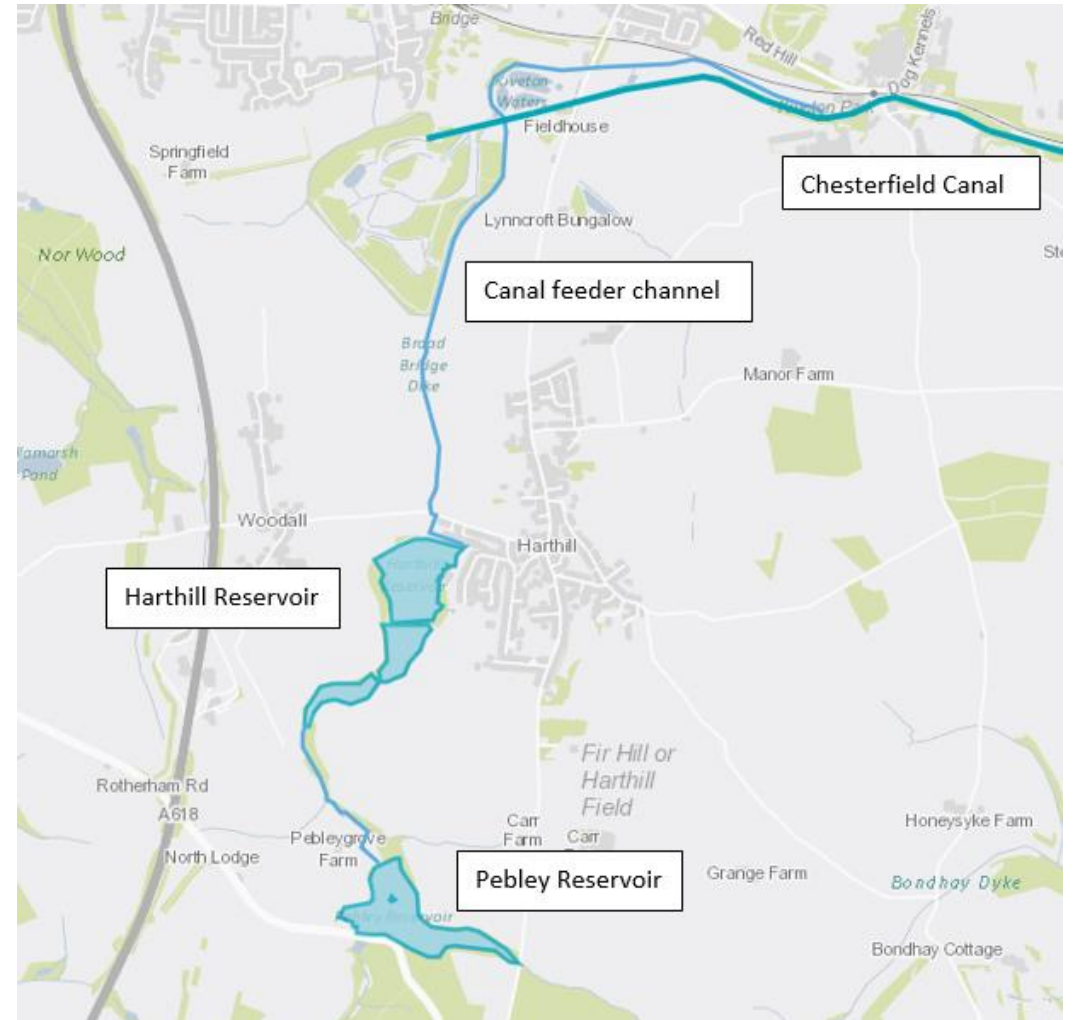
---

A detailed reservoir inspection in May 2020 found the reservoir to be safe, but in need of some improvement works.

---

Canal & River Trust plan to give the reservoir an upgrade, improving its resilience and bringing it up to date with our 21st century standards.

---





**Canal &  
River Trust**

Making life better by water

# Public consultation

# Public consultation (January 2022)

---

We are holding a public consultation on our proposals between **Monday 10 January and Sunday 30 January**.

We are pleased to be able to share our proposed updates for the reservoir and we want to understand any feedback the local community may have.

In addition to our online meeting, you can find out more information and provide feedback by:



Visiting our website: [www.canalrivertrust.org.uk/harthill](http://www.canalrivertrust.org.uk/harthill)



Emailing: [harthill@canalrivertrust.org.uk](mailto:harthill@canalrivertrust.org.uk)



Calling (Freephone): 0800 028 8141



Writing: Harthill Reservoir Consultation, 5th Floor, St James House, Sheffield, S1 2EX



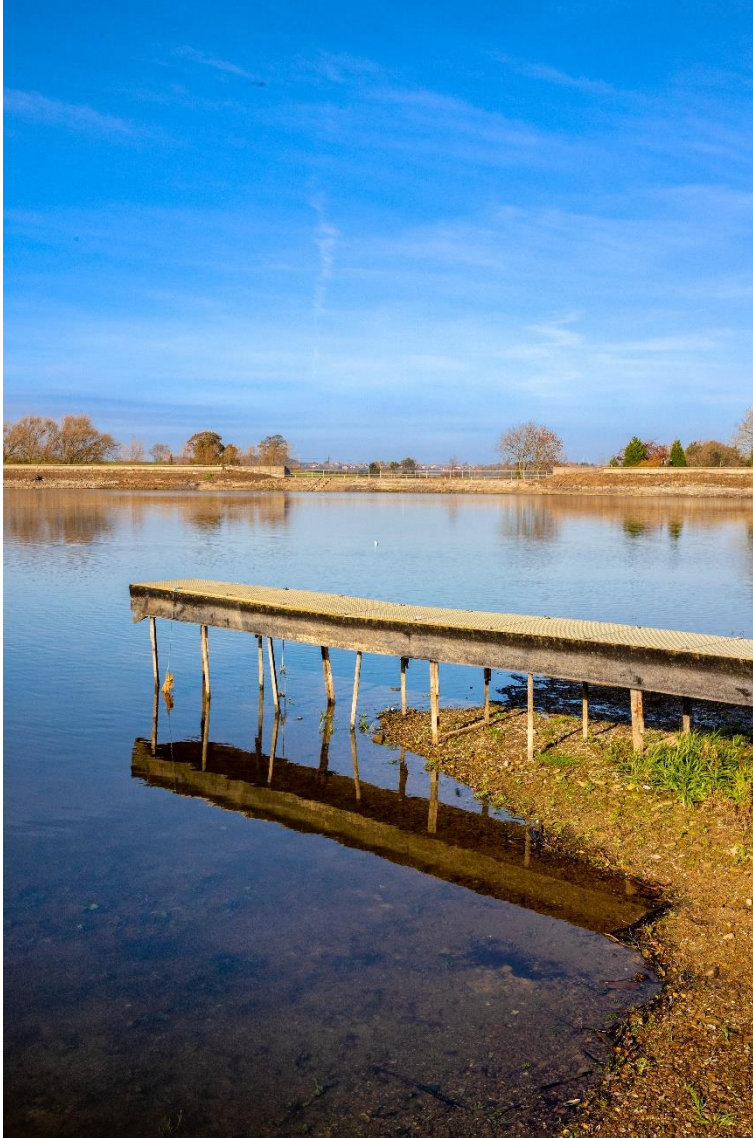
**Canal &  
River Trust**

Making life better by water

# Our timescales



# Timeline of upgrade works



## **2020-21: Feasibility, Optioneering & Design**

The project team has worked through feasibility and optioneering phases. We have carried out a range of ground investigation and topographical studies, as well as heritage and ecological assessments to inform our design.

## **Early 2022 (Now)**

We are now preparing to submit our proposals as a planning application to Rotherham Metropolitan Borough Council. Before doing this, we are sharing our design with the local community through a phase of public consultation.

## **2022-23: Upgrade Works & Construction**

Should we receive planning permission, the main upgrade works are due to start in 2022.

## **2023: Project Completion**

We expect the project to be completed by Spring 2023 and water levels to then return to normal.



**Canal &  
River Trust**

Making life better by water

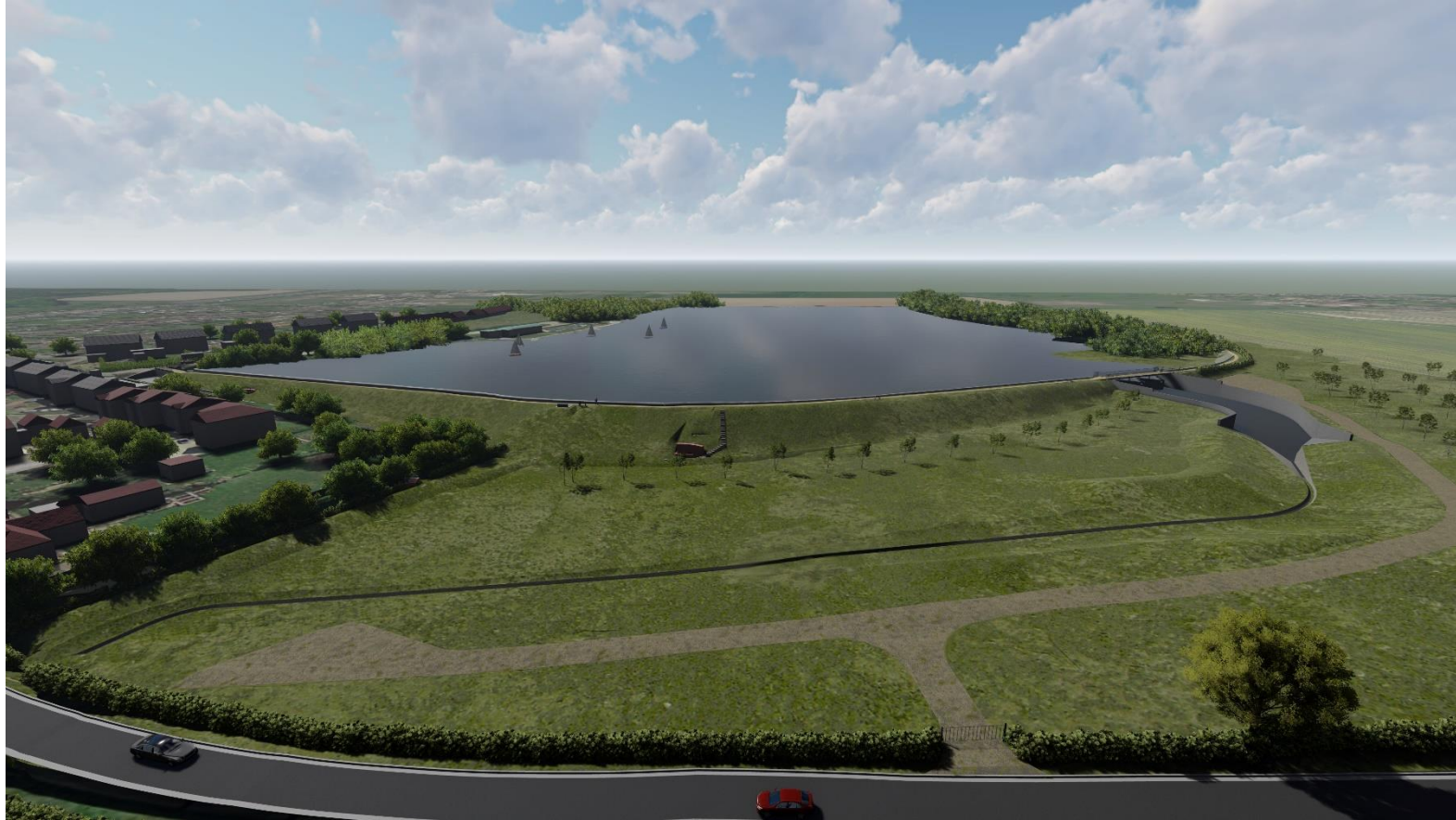
# Our proposals

# Harthill Reservoir – current design

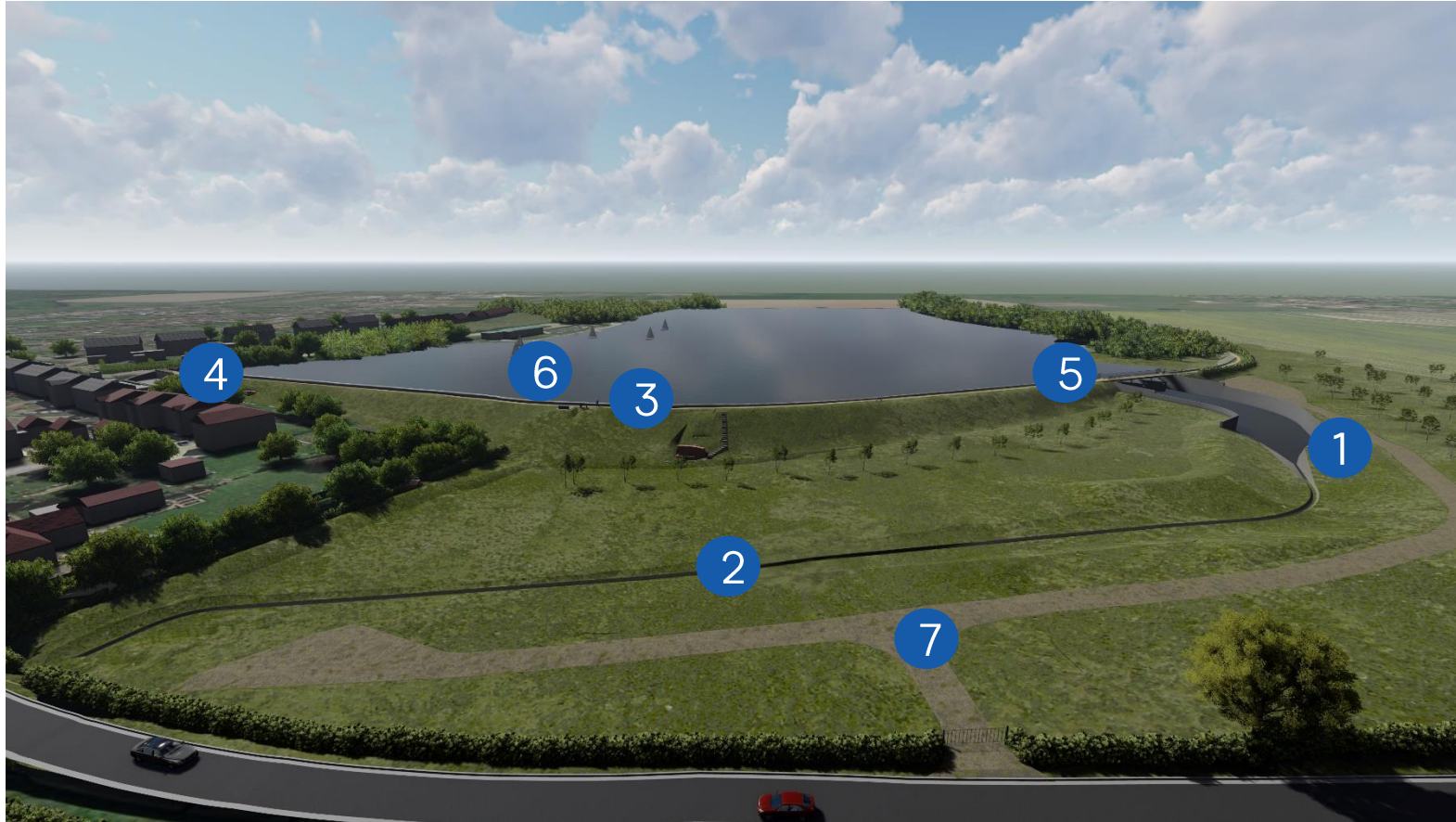




# Our proposal



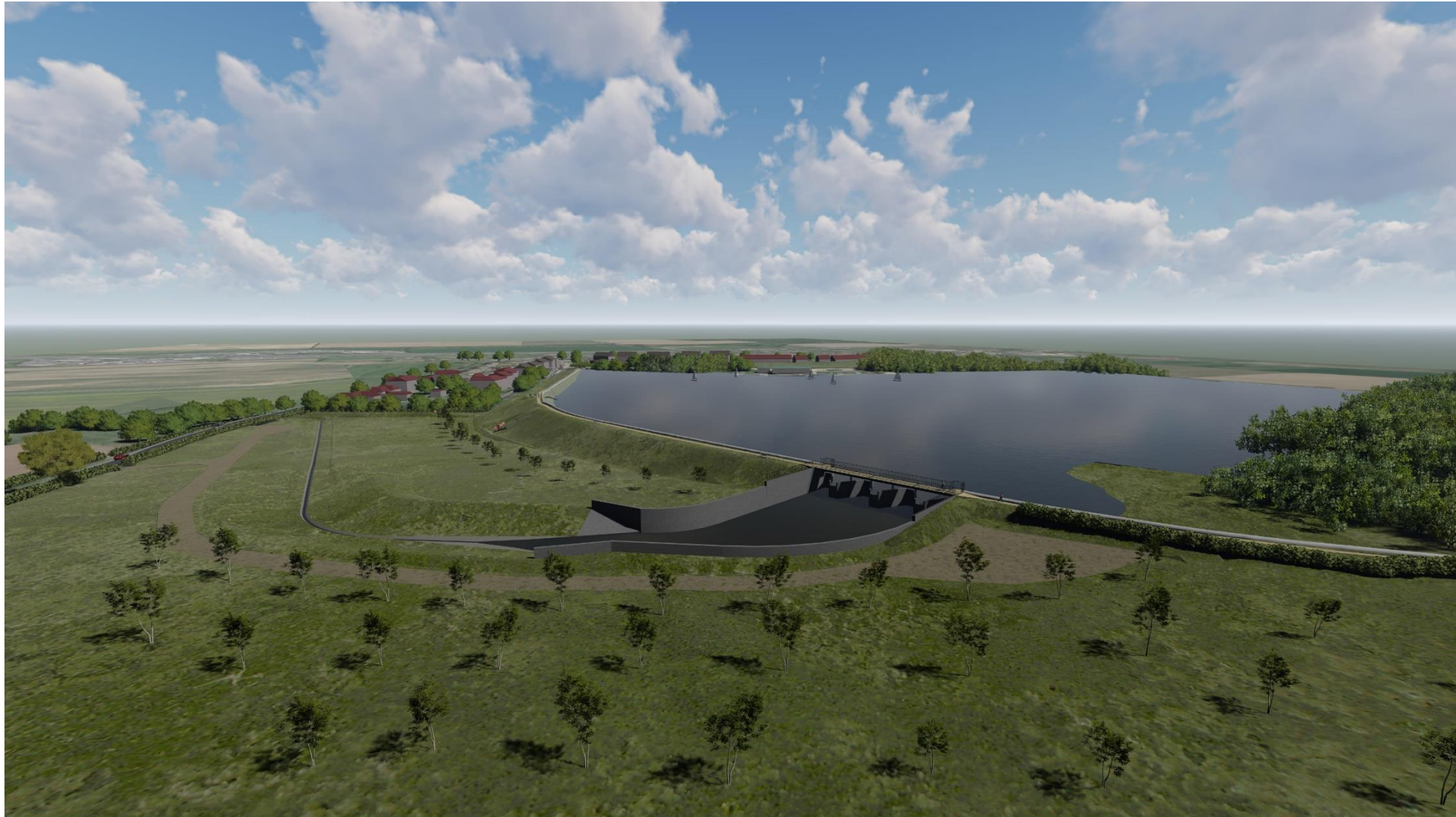
# Our proposal



1. A new spillway (weir) at the western end of the reservoir dam.
2. A new channel to take water from the new spillway to the existing culverts under Woodall Lane.
3. The existing concrete spillway removed and the dam reinstated to grass.
4. The original masonry spillway blocked off where the current footbridge is.
5. The footpath across the dam resurfaced with a footbridge crossing the new spillway.
6. New buried syphon pipes replacing the existing submerged pipes.
7. A new access track for inspecting and maintaining the reservoir.



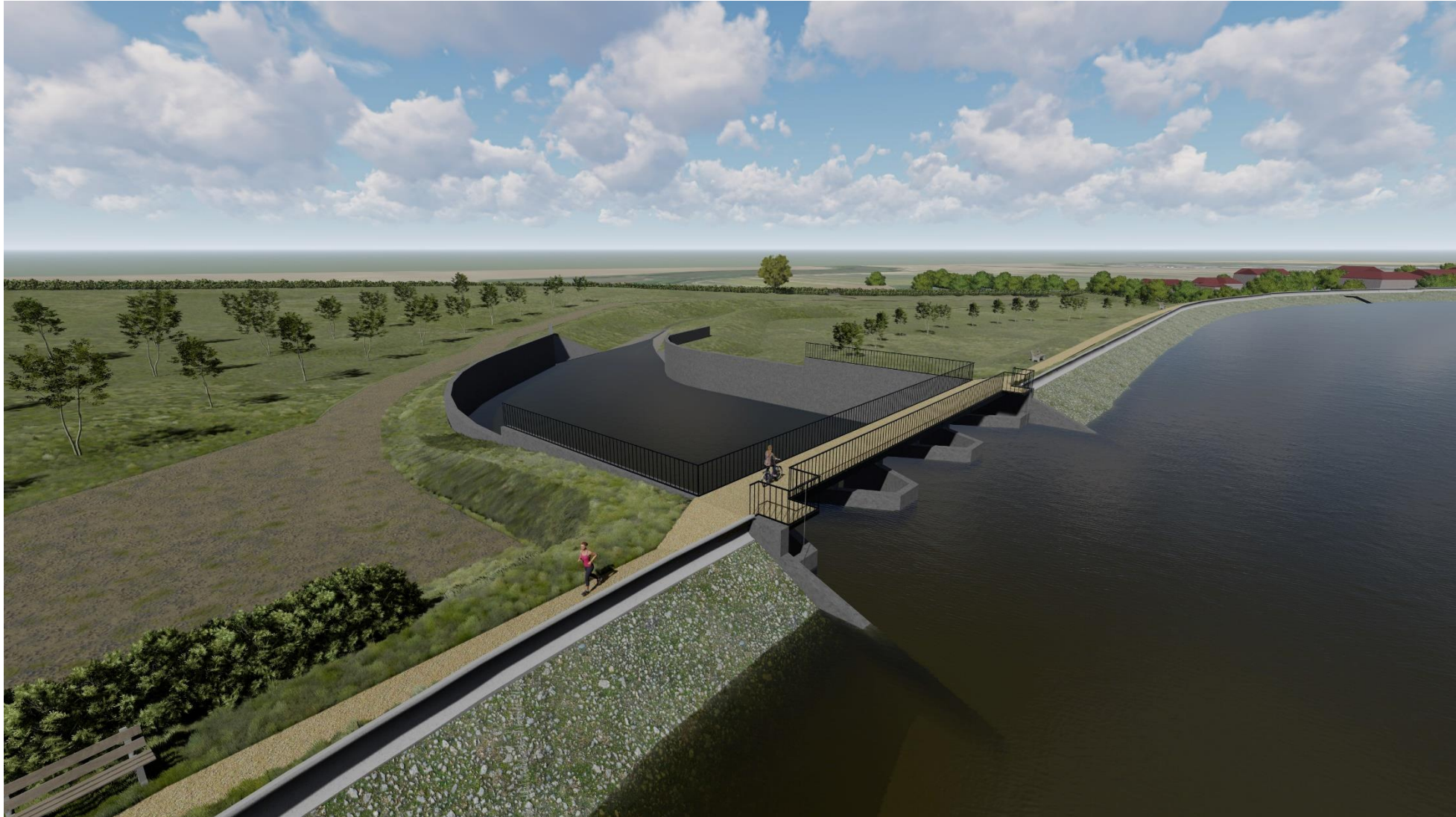
# View of the new spillway and footbridge



Indicative visualisation of proposals



# View of the new spillway and footbridge



Indicative visualisation of proposals



# View of resurfaced footpath and syphon pipes



Indicative visualisation of proposals



# Aerial view of reservoir and dam



Indicative visualisation of proposals

# Assessments

## Ecology

Surveys have been carried out to assess potential impact of the proposals and opportunities for enhancements. This included surveys for protected species such as otters, badgers, amphibians, reptiles and bats.

A Biodiversity Net Gain Assessment and replacement planting plan is in preparation to provide proposals for mitigation and ecological enhancements.

## Trees

Some existing trees and sections of hedgerow to the north of the reservoir dam will unfortunately have to be removed. However, this will be kept to a minimum.

Currently we anticipate having to remove nine individual trees, three groups of trees, and two sections of hedgerows.

## Heritage

Whilst the proposal does not affect any listed buildings and the reservoir is not within a conservation area, the reservoir is over 200 years old and the Trust considers it to be of heritage value.

The proposed works involve retaining original reservoir structures such as the two valve tunnels whilst upgrading the reservoir to modern day standards.

## Landscape and visual

A landscape and visual assessment of the proposals has been carried out and will be submitted with the planning application.

Existing trees and hedgerows will be retained wherever possible and opportunities for planting to provide ecological enhancements and as well as screening are being identified.



**Canal &  
River Trust**

Making life better by water

# Temporary changes and construction



# Our construction proposals

---

We anticipate construction of the new spillway and associated infrastructure to take up to 12 months.

---

We are proposing to use the field immediately north of the dam as our construction area. This will be accessed directly from Woodall Lane.

---

We are preparing a Construction Environmental Management Plan and Construction Traffic Management Plan, to be included as part of our planning application.

These will set out proposed measures for managing potential temporary impacts to local residents during construction.

---



# Temporary changes

---

We will need to fully drain the reservoir to carry out the proposed work. Unfortunately, this means the reservoir will not be available for recreational use.

---

Water levels will also be temporarily reduced at Pebley Reservoir, and the normal feed of water from Harthill Reservoir to Chesterfield Canal will be affected whilst the upgrade work is undertaken.

---

A specialist contractor will rescue fish from the reservoir before water levels are reduced. Subject to health checks, they will be transported to other reservoirs. After construction, the reservoir will be restocked.

---

The footpath across the reservoir dam will need to be closed for safety during the construction works. Other footpaths around the reservoir will remain open during the works whenever possible. However, short closures may be necessary to facilitate the works. These will be advertised in advance.

---





**Canal &  
River Trust**

Making life better by water

## Get in touch



**Visit:** [www.canalrivertrust.org.uk/harthill](http://www.canalrivertrust.org.uk/harthill)



**Email:** [harthill@canalrivertrust.org.uk](mailto:harthill@canalrivertrust.org.uk)



**Call:** 0800 028 8141



**Write:** Harthill Reservoir Consultation, 5th Floor, St James House, Sheffield, S1 2EX

 @canalrivertrust  
 /canalrivertrust  
 /canalrivertrust