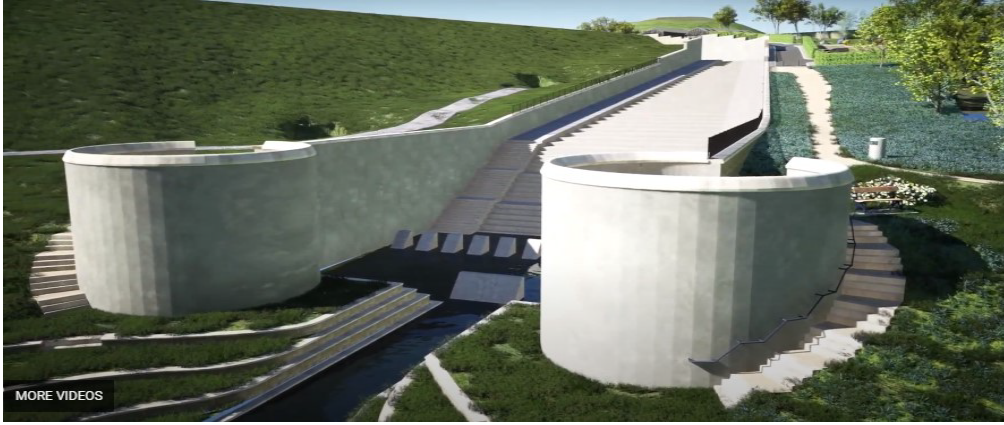


Toddbrook Turrets Artwork Consultation.



Tom Edwards (We are Culla) is an artist working with the Canal & River Trust, Kier and the residents of Whaley Bridge to create artwork for the two stilling basin turrets, at the base of the new Toddbrook Reservoir spillway, adjacent to Memorial Park.

The turrets are crucial elements to control the water flow from the spillway and will be a large focal point once complete. As such, special care will be taken to ensure they fit within the local environment as considerately as possible. The final artwork will be 'etched' into the surface of the turrets, providing a long-lasting timeless aesthetic which will help soften and blend the architecture into the natural surroundings.

Over the next few months Tom will be developing different design concepts and is looking for stories, comments or suggestions to take on board alongside his own research. Do you have an idea that you'd like us to include?

What parts of local culture, nature, industry, history, infrastructure and community would you like to see represented in the artwork?

Have your say and help create a lasting piece of art for the town's legacy!

Submissions are required by 15th of December 2023

Please return your completed form to the Transshipment warehouse in Whaley Bridge.

Describe Your
Idea/Story/Suggestion:

(Please continue overleaf if required)

Name (Optional) :

Email Address: (Optional) :

We may wish to contact you to help further research your suggestion or story. Do you consent for The Canal & River Trust, Kier or We are Culla to contact you about this? :

Yes

No