

Caring for the Stratford-upon-Avon Canal

We're the charity working to protect and bring to life this 250-year-old network of canals and rivers spanning England and Wales. Not so long ago many canals were abandoned, and some lost forever. Today, with your support, wildlife is recovering, history is alive, boats are plentiful and spending time in this environment is contributing to our health and happiness.

Our mission is to keep this extraordinary network of canals and rivers alive, teeming with wildlife, transforming places they run through and enriching all of our lives. Your support today could help us care for Bancroft Basin and many more places, for today and generations to come.

DONATE



Please support our work & donate today

SCAN ME



Canal & River Trust

Making life better by water

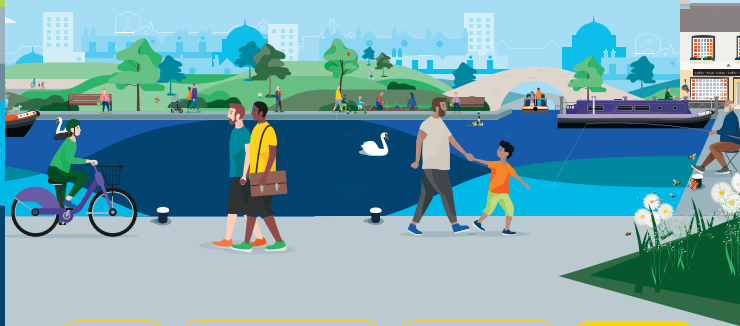
Keeping history alive

The 25 mile (40km) long Stratford-upon-Avon Canal opened in 1816 connecting the town and the River Avon with Birmingham. There are 56 locks, one tunnel, four aqueducts, three embankments and a reservoir along its length.

The canal cost £297,000 to build, equivalent to £25 million today. With the advance of railways, the canal gradually fell into disuse. Plans to permanently close the waterway in 1948 were thwarted when the newly formed canal society made a journey along the waterway by canoe, proving that boats still wanted to navigate the canal.

A combination of volunteers, army personnel and prisoners gradually restored the Southern Stratford stretch and it was reopened by HM The Queen Mother in 1964.

Discover lots of fun things to do with the family by and on the water. Go to canalrivertrust.org.uk/explorers



Enjoy

Take Action

Volunteer

Donate

canalrivertrust.org.uk

Registered charity no. 1146792

March 2023



Canal & River Trust

Welcome to Bancroft Basin, Stratford-upon-Avon

A gem set in the heart of this historic town.



The task of protecting the finest examples of working industrial heritage including Bancroft Basin, and the wildlife that calls it home, is growing all the time. As a charity we need you by our side more than ever. Please support our work today.

Registered with



FUNDRAISING
REGULATOR

We're the charity making life better by water



Now surrounded by gardens, Bancroft Basin was once home to wharves and warehouses with canal boats loading and unloading coal.

5 things to do at Bancroft Basin, Stratford-upon-Avon

- 1** Enjoy a traffic-free cycle or walk along the towpath past flights of locks to Mary Arden's house (3 miles/5km).
- 2** Relax and explore the river on a cruise or a boat trip.
- 3** Rest for a moment on the picnic benches and take in the views across to the Royal Shakespeare Theatre.
- 4** Enjoy a bite to eat or a drink from one of the floating food vendors in the basin.
- 5** Pause and watch the waterway wildlife including the famous colony of Stratford swans.

Swan's Nest Lane,
Stratford-upon-Avon CV37 6BB

Allow half a day for your visit

Map not to scale: covers approx. 1/2 mile / 0.8km

Find your way around

- | | | | |
|--------------|-------------------|--------------|-----------------|
| towpath | toilets | information | parking |
| café | shopping | rowing boats | railway station |
| pub | bench/picnic area | trip boat | |
| food & drink | point of interest | marina | |

Details correct at time of print, please check before travelling.

Stay SAFE
Stay Away From the Edge!
For more information on visiting safely:
canalrivertrust.org.uk/safety

Did you know?
There were once two basins in Stratford. In 1930 the second basin was filled to create Bancroft Gardens.

