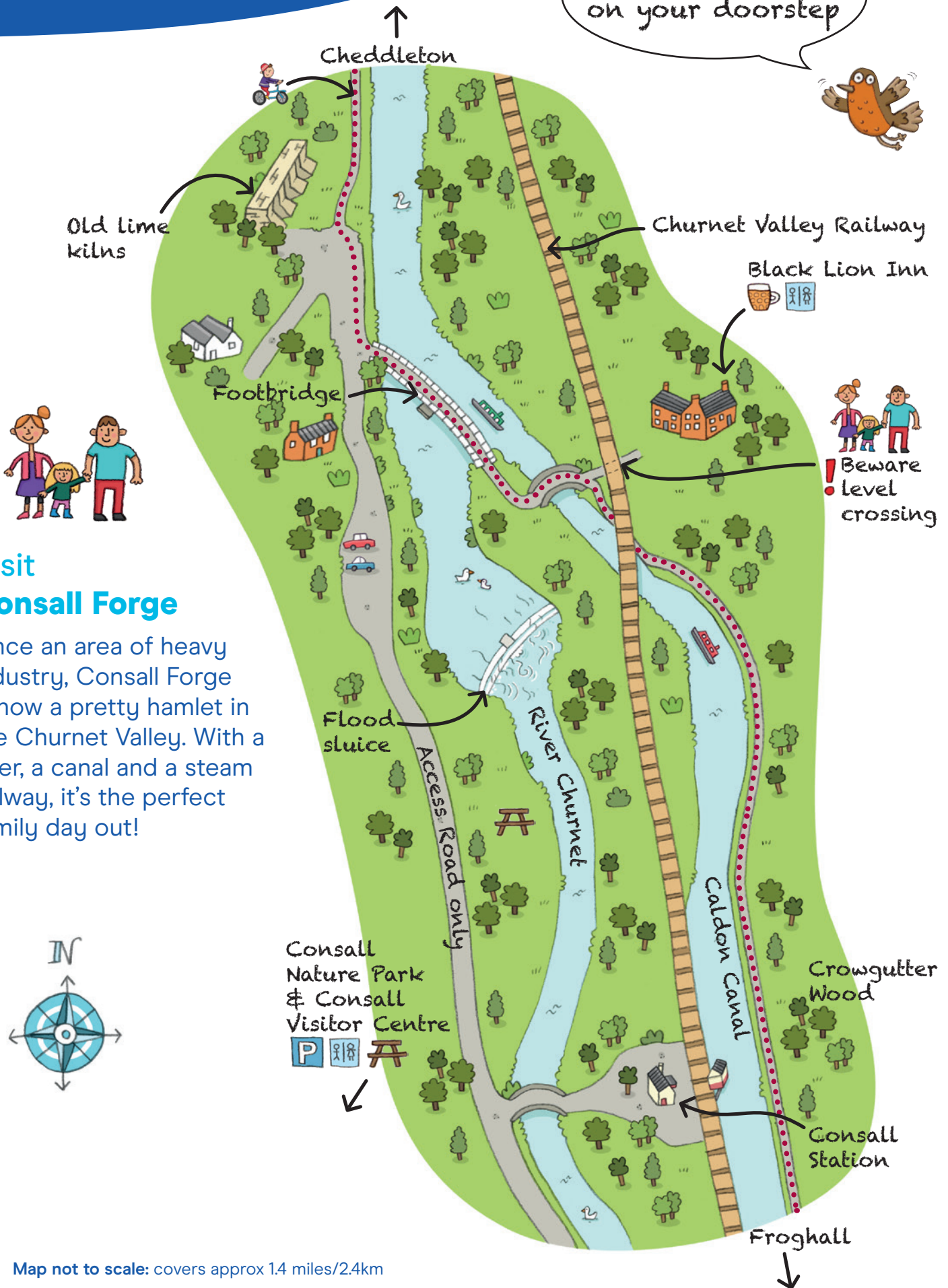




# Canal & River Trust

Making life better by water

Little adventures on your doorstep



## Visit Consall Forge

Once an area of heavy industry, Consall Forge is now a pretty hamlet in the Churnet Valley. With a river, a canal and a steam railway, it's the perfect family day out!



## A little bit of history

The Caldon Canal is a branch of the Trent & Mersey Canal. It was originally built to channel some of the plentiful rainfall of the Staffordshire Moors to the Trent & Mersey Canal. It was the last project of James Brindley, the famous canal engineer, who died shortly after surveying the line of the canal.




Best of all  
it's FREE!\*


### Five things to do at Consall Forge

- Visit** the Consall Forge Nature Park and follow a trail. You might even spot birds of prey.
- Bring** a picnic and a fishing net and go canal dipping.
- Take** a scenic ride on the Churnet Valley Railway that runs alongside the river and canal.
- Bike** along the towpath and stop along the way at the Black Lion Inn, a traditional canal side pub.
- Watch** brightly painted narrowboats chug slowly along the canal and wave to boaters as they pass.

### Information


Consall Forge  
Wetley Rocks  
Stoke on Trent  
ST9 0AF

 Parking (pub)


 Toilets

 Pub

 Picnic area

 Cycling

 Path

 Allow 2-3 hours  
for this visit

#### \* Don't forget:

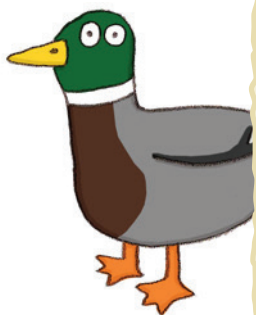
Although the site is always open the facilities and boat trips may not be and some may be chargeable. Please check with local businesses before setting out.

### Did you know?...

It's best to feed ducks tasty treats like:

- porridge oats
- rice
- peas
- chopped lettuce
- birdseed

Whilst they will gobble up white bread, crisps and chips its junk food for you and ducks!



Go to [canalriverexplorers.org.uk](http://canalriverexplorers.org.uk) to discover lots of fun things to do with the family.

A big thank you to all the volunteers who helped produce these.